



West Virginia Legislature

Joint Committee on Government & Finance

Department of Human Services

A Statistical and Programmatic Overview

Jeremiah Samples

4/18/23

Joint Committee on Children and Families



Agenda

1. DHHR Reform Overview
2. Department of Human Services Structure and Major Issues
3. Health and Welfare Statistics
4. Culture of Life Statistics



“In charting our course to the future, we are mindful of our path from the past.”

-Brad Henry

“You can’t improve what you don’t measure.”

-Peter Drucker*



Why Did Legislature Reorg DHHR

1. Statistically, decades of failed outcomes
2. Conflicts of interest between regulatory and service agencies
3. Burdensome layers of bureaucracy
4. Crises draining focus from critical management problems
5. Big government impeding transparency and accountability
6. Budget obfuscation preventing the Legislature from setting priorities



Goal of Legislature's DHHR Reform

1. Conflict of interest elimination
2. Eliminate layers of bureaucracy
3. Ensure protection of the vulnerable
4. Accountable and transparent government
5. Outcome measure improvements
6. Reassert public control over bureaucracy
7. Protect federal funding integrity
8. End cycle of repeated failures



HB 2006

1. Phased-In three department model
2. Streamlined Shared Administration
3. Independent Inspector General
4. Collapse layers of bureaucracy
5. Reform without cost increases
6. Budget restructuring
7. Future program realignment

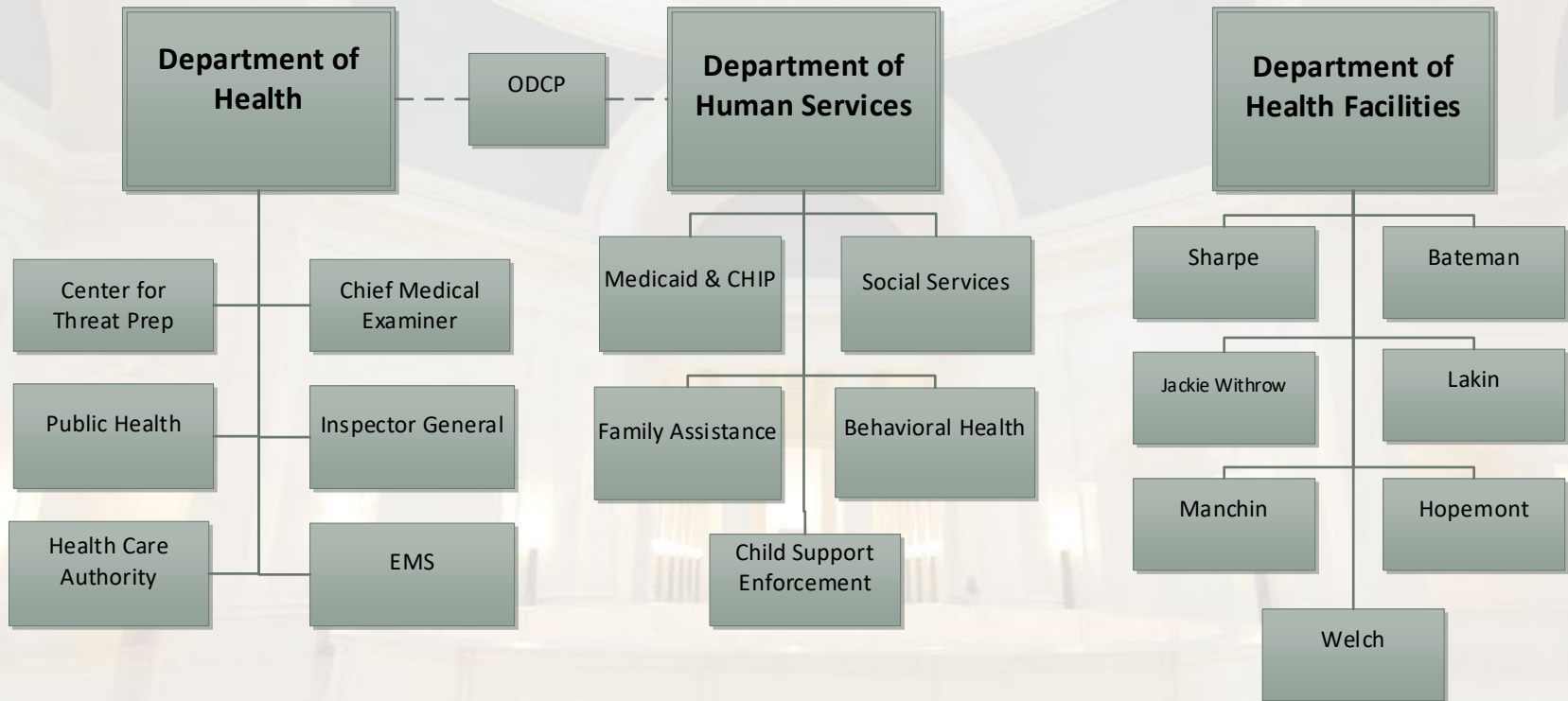


DHHR Reform: Phased Approach

1. **January-March 2023:** Passage of DHHR reorganization legislation. Passage of budget bill breaking down OHF funding buckets by facility.
2. **April-December 2023:** LOCHHRA will focus on various aspects of reorg effort to ensure timely implementation and study additional reforms.
3. **January 2024:** Department of Health, Department of Human Services, and Department of Health Facilities formally enacted.
4. **January-March 2024:** Passage of legislation moving individual programs determined to best be placed in other cabinet departments.
5. **January-March 2024:** Passage of budget bill reflecting budgetary reorganization.
6. **January-March 2024:** Passage of technical cleanup legislation removing DHHR from statute.
7. **June 2024:** Formal implement date of plan to collapse and streamline historic DHHR central bureaucracy.



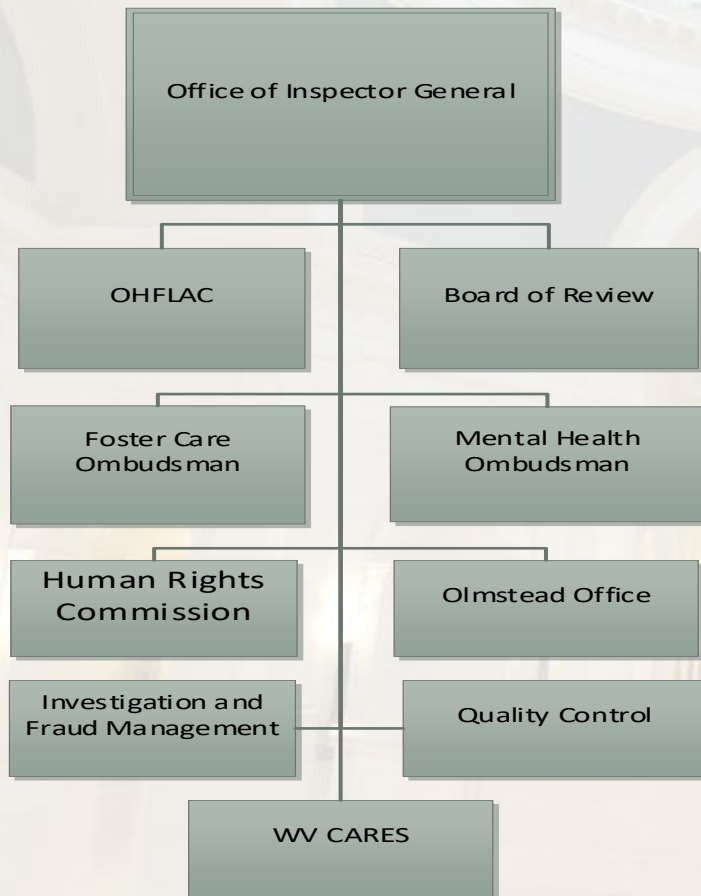
DHHR Reorganization Phase 1



Phase 1 complete by January 1, 2024



Office of Inspector General



1. Based off state of Maryland model to eliminate conflicts and ensure oversight integrity
2. Appointed by Governor
3. Serves up to two five-year terms
4. Administratively supported by Office of Shared Admin and Dept of Health
5. Submits independent budget
6. Makes independent personnel decisions
7. Freedom to engage Legislature to report information and propose policy solutions independently



Phase 2: Program Realignment

Several current DHHR programs are being evaluated to assess if they are better aligned in other areas of government. These changes would occur in the 2024 Legislative Session. Following are examples of what is being evaluated.

1. Office of Nutrition Services and WIC to Dept of Human Services (DHS) in Family Assistance
2. Birth to Three to DHS in Behavioral Health
3. Environmental engineering to DEP
4. Radiological, Toxics and Indoor Air to DEP
5. Right from the Start to DHS in Behavioral Health
6. EPSDT to DHS in Medicaid
7. Medical Cannabis to Agriculture
8. Division of Early Care and Education programming to Department of Education
9. Early Care and Education regs to Dept of Health, OIG
10. Threat Prep to Homeland Security
11. Women's Commission to Department of Economic Development
12. TANF to Department of Commerce
13. Human Rights Commission to Attorney General
14. Medicaid, CHIP, PEIA, BRIM, and OIC in new state insurance department



Phase 2: Budget Reform

Budget Obfuscation:

- DHHR's budget structure provides outsized authority to the bureaucracy and can impede the Legislature's power of the purse.
- Current budget structure obstructs transparency- leading to waste and lack of program accountability.
- DHHR's budget retains the Division of Health and Division of Human Services super funds. These funds existed before DHHR was merged in 1989 and collocate funding for dozens of programs each making it nearly impossible to see what funding is actually allocated to specific programs.

Budget Reform:

- Restructure budget to reflect program level spending.
- Attach accountability measures to each program area to ensure taxpayers are getting a return on investment.
- Bring clarity to funding transfers and compel improved expenditure reports.
- Reassess budgetary commitments for purpose of eliminating programs that underperform or that do not reflect the goals of the Legislature.



Phase 2: Technical Nuts and Bolts

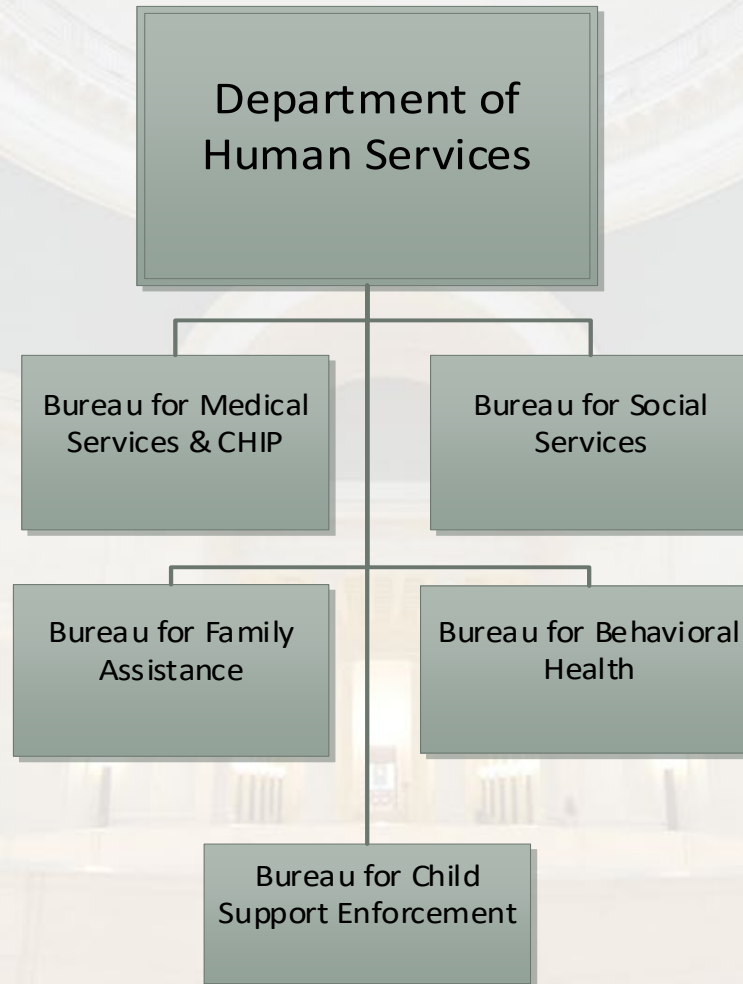
1. Reorganize agency rules
2. Ensure MOUs and contracts are properly aligned
3. Oversee personnel service realignment and bureaucratic reduction
4. Ensure proper reporting and elimination of unnecessary reports
5. Clean-up statute so that referenced to DHHR responsibilities and authorities are retooled based on new alignment



West Virginia Legislature

Joint Committee on Government & Finance

Department of Human Services





DHS Positions by Bureau

Bureau	Vacant FTE	Filled FTE	Total FTE
Bureau for Behavioral Health	14	61	75
Bureau for Family Assistance	171	1092	1263
Bureau for Social Services	286.5	1167.5	1454
Bureau for Child Support Enforcement	118.8	357.8	476.6
Bureau for Medical Services (Medicaid)	27	82	109
Total Bureau Staffing	617.3	2,760.3	3,377.6

Source: DHHR Budget Report (January 3, 2023) and DHHR FTE Breakdown (January 27, 2023)

Note 1: There are 512.96 central office DHHR positions that will be collapsed, redistributed, or shared.

Note 2: There are 2,567.69 positions in the Department of Health and Department of Health Facilities.



DHS Budget by Bureau

Agency	Federal Block Grant	App. Special	Non-App. Special	General Revenue	Federal Revenue	Total
Medicaid	-	\$525.5M	\$65.1M	\$437M	\$4.297B	\$5.325B
CHIP	-	-	-	\$15M	\$57.2M	\$72.2M
Family Assistance	\$379.7M	\$1.2M	\$3.1M	\$73.7M	\$48.3M	\$506M
Social Services	\$61.1M	\$535K	\$644K	\$280.7M	\$172.6M	\$515.6M
Behavioral Health	\$44.7M	\$10.7M	\$7.8M	\$73.5M	\$99.6M	\$236.2M
Child Support	-	-	-	\$9.7M	\$31.3M	\$41M
Total	\$485.5M	\$537.9M	\$76.6M	\$889.6M	\$4.706B	\$6.696B



Overview: Medicaid and CHIP

Program Facts

1. Medicaid covers health services for 665,000 West Virginians
2. Citizens are eligible for Medicaid based on income, disability, or age
3. Approximately 540,000 Medicaid members are in managed care
4. Medicaid's Traditional Federal Match Rate for FY2024 is 74.1%
5. Medicaid Expansion's Federal Match Rate is 90%
6. CHIP covers 20,000 West Virginia children

Major Issues

Programmatic

1. Unwinding pandemic eligibility
2. PATH system issues
3. Poor population health outcomes
4. Benefit cliff

Budgetary

1. Changing Federal match rate
2. Long term care expenditure trends
3. In-home care rates
4. FQHC (primary care) and CCBHC (behavioral health) rates



Overview: Family Assistance

Program Facts	Major Issues
<ol style="list-style-type: none">1. Programs under Bureau for Family Assistance<ol style="list-style-type: none">a. WV WORKS (TANF)b. SNAP (food stamps)c. School Clothing Assistanced. Utility Assistancee. Child Caref. Burial Assistanceg. Refugee Resettlementh. Emergency Assistance2. Manages DHHR county offices3. Manages eligibility determination for Medicaid and CHIP	<p>Programmatic</p> <ol style="list-style-type: none">1. Lack of child care infrastructure2. Poor workforce participation3. Hunger issues4. PATH system issues <p>Budgetary</p> <ol style="list-style-type: none">1. End of pandemic SNAP enhancements2. Child care infrastructure3. Ongoing cost of county office leases4. Vacancy issues



Overview: Social Services

Program Facts

1. Programs under Bureau for Social Services
 - a. Child Protective Services
 - b. Foster Care and Adoptive Services
 - c. Centralized Intake (Abuse/Neglect Hotline)
 - d. Adult Protective Services
 - e. Adult Residential Services
2. Currently under MOU with Department of Justice concerning inappropriate placement of foster children with behavioral issues
3. Manages a child residential facility for foster kids in Elkins- West Virginia Children's Home
4. WV leads the nation in number of children in foster care per capita

Major Issues

Programmatic

1. High vacancy rates
2. Children sent out of state for behavioral health services
3. Communications with foster parents
4. PATH and IT system issues

Budgetary

1. \$83M in surplus
2. Socially Necessary Service
3. Child residential and emergency shelter provider rates
4. Payments to foster parents and providers



Overview: Behavioral Health

Program Facts

1. Programmatic responsibilities of the Bureau for Behavioral Health
 - a. Adult Mental Health Infrastructure
 - b. Child Mental Health Infrastructure
 - c. Homelessness
 - d. IDD Infrastructure
 - e. Forensic Group Homes
 - f. Substance Use Disorder Infrastructure
 - g. Specialized Adult Group Homes
 - h. Suicide Hotline
 - i. Children's Crisis Hotline
 - j. Synar Tobacco Prevention
2. WV leads the nation in fatal overdose deaths and has since 2010
3. WV ranks 49th in mental health workforce and 50th in rate of poor mental health days and depression

Major Issues

Programmatic

1. Poor outcomes in adult & child mental health
2. Lack of meaningful progress in drug crisis
3. IDD abuse and deaths
4. Lack of provider infrastructure

Budgetary

1. Returning tens of millions of dollars to the Federal government
2. Ongoing forensic group home costs
3. Lost investments to build provider infrastructure



Overview: Child Support

Program Facts

1. Primary responsibilities are:
 - a. Establishment of paternity
 - b. Establishment of child support and medical support orders
 - c. Collection of support money to meet the financial needs of children
 - d. Enforces court orders for spousal support, known as alimony
2. The Bureau services currently benefit more than 128,000 individuals. This number includes those receiving child support payments and their children.
3. Serves more than 49,000 individuals who are ordered to pay support.

Major Issues

Programmatic

1. Establishment of paternity- since 2015, WV has dropped from 15th to 21st nationally
2. Establishment of support orders- since 2015, WV has dropped from 10th to 24th nationally
3. Individuals not paying child support still receiving government welfare services

Budgetary

1. Staffing issues
2. Implementation of PATH



*A History of Poor Outcomes
Reflected in Health and
Social Welfare Statistics*



Measure	Rank	Source	Measure	Rank	Source
Per Capita Income	48	United Health Foundation, America's Health Rankings, 2021	Overall Economic Well-Being	47	Annie E. Casey Foundation, 2022
Median Annual Household Income	49	U.S. Census Bureau, 2021, American Community Survey	People with Medical Debt	50	Commonwealth Fund, 2022
Economic Hardship	45	United Health Foundation, America's Health Rankings, 2021	Poverty	47	United Health Foundation, America's Health Rankings, 2021
Labor Force Participation, December 2022	50	U.S. Bureau of Labor Statistics, Labor Force Participation Rate, Federal Reserve Bank of St. Louis	Neonatal Abstinence Syndrome	50	Healthcare Cost and Utilization Project, 2018
Labor Force Participation, Overall, 2016-2022	50	US Census Bureau, America Community Survey	Rate of Children in State Custody	50	Annie E. Casey Foundation, 2022
Labor Force Participation, Prime Age 25-54, 2016-2020	50	US Census Bureau, America Community Survey	Time to Initiate CPS Investigation	49	Administration for Children and Families, 2022
Labor Force Participation, Males Age 20-64, 2016-2020	50	US Census Bureau, America Community Survey	Youth residing in detention or residential facilities	49	Annie E. Casey Foundation Kids Count Data Center
Labor Force Participation, Females Age 20-64, 2016-2020	50	US Census Bureau, America Community Survey	Percentage of Children Living with Grandparents	50	Annie E. Casey Foundation Kids Count Data Center
Labor Force Participation, Mothers, 2016-2020	44	US Census Bureau, America Community Survey	Percent of Children in Kinship Care	50	Annie E. Casey Foundation, 2022
Per capita Medicaid Recipients	47	Kaiser Family Foundation, Medicaid Files, 2022	Rate of CPS Referrals	50	Annie E. Casey Foundation, 2022



Measure	Rank	Source	Measure	Rank	Source
Percent of Foster Children in Institutional Care	39	Annie E. Casey Foundation Kids Count Data Center	Public Health	50	US News and World Report State Health Rankings, Retrieved 2022
Adverse Childhood Events	46	United Health Foundation, America's Health Rankings, 2021	Premature Death	49	United Health Foundation, America's Health Rankings, 2022
Premature Death	50	United Health Foundation, America's Health Rankings, 2021	Life Expectancy at Birth	49	Kaiser Family Foundation
Teens Reporting Drug Addiction	42	Kaiser Family Foundation	Death by Accident	50	CDC Wonder
Drug Overdoses	50	United Health Foundation, America's Health Rankings	Middle Age Death Rate	50	Woolf SH, Schoomaker H. Life Expectancy and Mortality Rates in the United States. JAMA. 2019.
Low Birthweight	44	United Health Foundation, America's Health Rankings, 2021	Drinking Water Violations	50	United Health Foundation, America's Health Rankings, 2021
Preterm Birth Rate	46	CDC, BRFSS	Depression	50	United Health Foundation, America's Health Rankings, 2021
Cesarean Delivery Rate	45	CDC, BRFSS	Adults with Substance Use Disorder	49	Mental Health Matters, 2022
Childhood First Time Victim Rate	50	Administration for Children and Families, 2020	Adults that Consider Suicide	42	Mental Health Matters, 2022
Individuals with Disabilities	50	US Census Bureau; Institute on Disability	Adults Reporting Anxiety or Depression During COVID	48	Kaiser Family Foundation, 2022



Measure	Rank	Source	Measure	Rank	Source
Prevalence of Mental Illness	49	Mental Health Matters, 2022	Hepatitis B	49	CDC, National Notifiable Diseases Surveillance System
Adults Reporting Any Mental Illness	48	Kaiser Family Foundation	Hepatitis C	49	CDC, National Notifiable Diseases Surveillance System
Poor Mental Health Days	50	University of Wisconsin, County Health Rankings	Death by Influenza/Pneumonia	46	CDC Wonder
Drug Use	50	United Health Foundation, America's Health Rankings, 2021	Death by Heart Disease	41	CDC Wonder
Suicide	40	CDC, Wonder	Asthma	50	United Health Foundation, America's Health Rankings, 2021
Mental Health Workforce Availability	49	Mental Health Matters, 2022	Death by Cancer	49	CDC Wonder
Frequent Mental Distress	49	United Health Foundation, America's Health Rankings, 2022	Cancer	47	United Health Foundation, America's Health Rankings, 2021
Mental Health Providers	48	United Health Foundation, America's Health Rankings, 2021	Cardiovascular Disease	50	United Health Foundation, America's Health Rankings, 2021
Mental Health Access to Care	48	United Health Foundation, America's Health Rankings, 2021	Multiple Chronic Conditions	49	United Health Foundation, America's Health Rankings, 2022
Adults Who Report Poor Health	50	Kaiser Family Foundation, estimates based on 2008-2019 American Community Survey	Healthy Lifestyle	50	Commonwealth Fund, 2022
Arthritis	50	United Health Foundation, America's Health Rankings, 2021	Death by Chronic Lower Respiratory Disease	48	CDC Wonder



Measure	Rank	Source	Measure	Rank	Source
Death by Kidney Disease	50	CDC Wonder	Fruit and Vegetable Consumption	48	United Health Foundation, America's Health Rankings, 2021
Chronic Obstructive Pulmonary Disease	50	United Health Foundation, America's Health Rankings, 2021	Physical Inactivity	47	United Health Foundation, America's Health Rankings, 2021
Diabetes	50	United Health Foundation, America's Health Rankings, 2021	Infant Mortality Rate	47	CDC Wonder
Death by Diabetes	50	CDC Wonder	Rate of Child Death Age 1-14	42	Kaiser Family Foundation
High Blood Pressure	50	United Health Foundation, America's Health Rankings, 2021	Teen Births	45	United Health Foundation, America's Health Rankings
High Cholesterol	50	United Health Foundation, America's Health Rankings, 2021	Frequent Physical Distress	49	United Health Foundation, America's Health Rankings, 2022
Obesity	49	United Health Foundation, America's Health Rankings, 2021	Insufficient Sleep	49	United Health Foundation, America's Health Rankings, 2021
Childhood Obesity	50	Commonwealth Fund, 2022	Teen Tobacco Use Rate	50	Kaiser Family Foundation
Health Care Quality	43	US News and World Report State Health Rankings, Retrieved 2022	Adult Smoking Rate	50	Kaiser Family Foundation
Adults With No Dental Visits in Past Year	50	Wallet Hub, 2021	Smoking Overall	50	United Health Foundation, America's Health Rankings, 2021
Adults who have lost six or more teeth	50	Commonwealth Fund, 2022	Health Care Performance	50	Commonwealth Fund, 2022



Measure	Rank	Source	Measure	Rank	Source
Commercial Health Insurance Premiums	50	Premium Comparison of Health Insurance Exchange, Consumer Health Rankings 2021	Avoidable Emergency Department Visits Over 65	50	Commonwealth Fund, 2022
Child Care Quality	50	Care Index and New America	Preventable Hospitalization	50	United Health Foundation, America's Health Rankings, 2021
Overall Child Care Rating	50	Care Index and New America	Hospital Readmissions for Aged 65 and Older	50	Commonwealth Fund, 2022
Health Care Expenditures Per Capita (highest to lowest)	5	Kaiser Family Foundation, 2020	Hospitals w/ patient experience ratings higher than national median	46	Commonwealth Fund, 2022
Nursing Home Quality	47	Jayne Fraser, USA TODAY investigative data reporter, CMS Star Rating Data	Dental Care Providers	48	Wallet Hub, 2021
Nursing Home Statewide Reimbursement Average (highest to lowest)	9	American Council on Aging, 2022	Follow-Up within 7 days After Hospitalization for Mental Health- Age 6-17	45 only 45 reporting	CMS, Medicaid Scorecard
Nursing Home Long Stay Quality Measure Rating	49	Care Compare Provider Dataset	Home health patients with a hospital admission	50	Commonwealth Fund, 2022
Nursing Home Quality Measure Rating	48	Care Compare Provider Dataset	Avoidable Hospital Use and Cost	50	Commonwealth Fund, 2022
Premature deaths from preventable causes	50	Commonwealth Fund, 2022	Exercise	46	United Health Foundation, America's Health Rankings, 2021
Number of Prescriptions Filled Per Capita (highest to lowest)	2	Kaiser Family Foundation, 2019	Overall Health Outcomes	47	Wallet Hub, 2021



Measure	Rank	Source
Hepatitis A	48	CDC, National Notifiable Diseases Surveillance System
Per capita Food Stamps (SNAP) Recipients	49	United States Department of Agriculture, USDA Food and Nutrition Service
Food Insecurity	49	United Health Foundation, America's Health Rankings, 2021
Follow-Up 7 Days After Hospitalization for Mental Illness-Age 18 and older	42 Only 48 Reporting	CMS Medicaid Scorecard
Follow-Up After Emergency Department Visit for Mental Illness-Age 18 and Older	40 Only 40 Reporting	CMS Medicaid Scorecard
Emergency Dept Visits for Children Age 0-19	45 Only 46 Reporting	CMS Medicaid Scorecard
Overall Child Well-Being	42	Annie E. Casey Foundation, 2022
Percent of Births to Unmarried Mothers	41	CDC, BRFSS
Adults Reporting Serious Mental Illness	47	Kaiser Family Foundation
Adolescents Reporting Major Depressive Episode in Year	45	Kaiser Family Foundation
Chronic Kidney Disease	50	United Health Foundation, America's Health Rankings, 2021

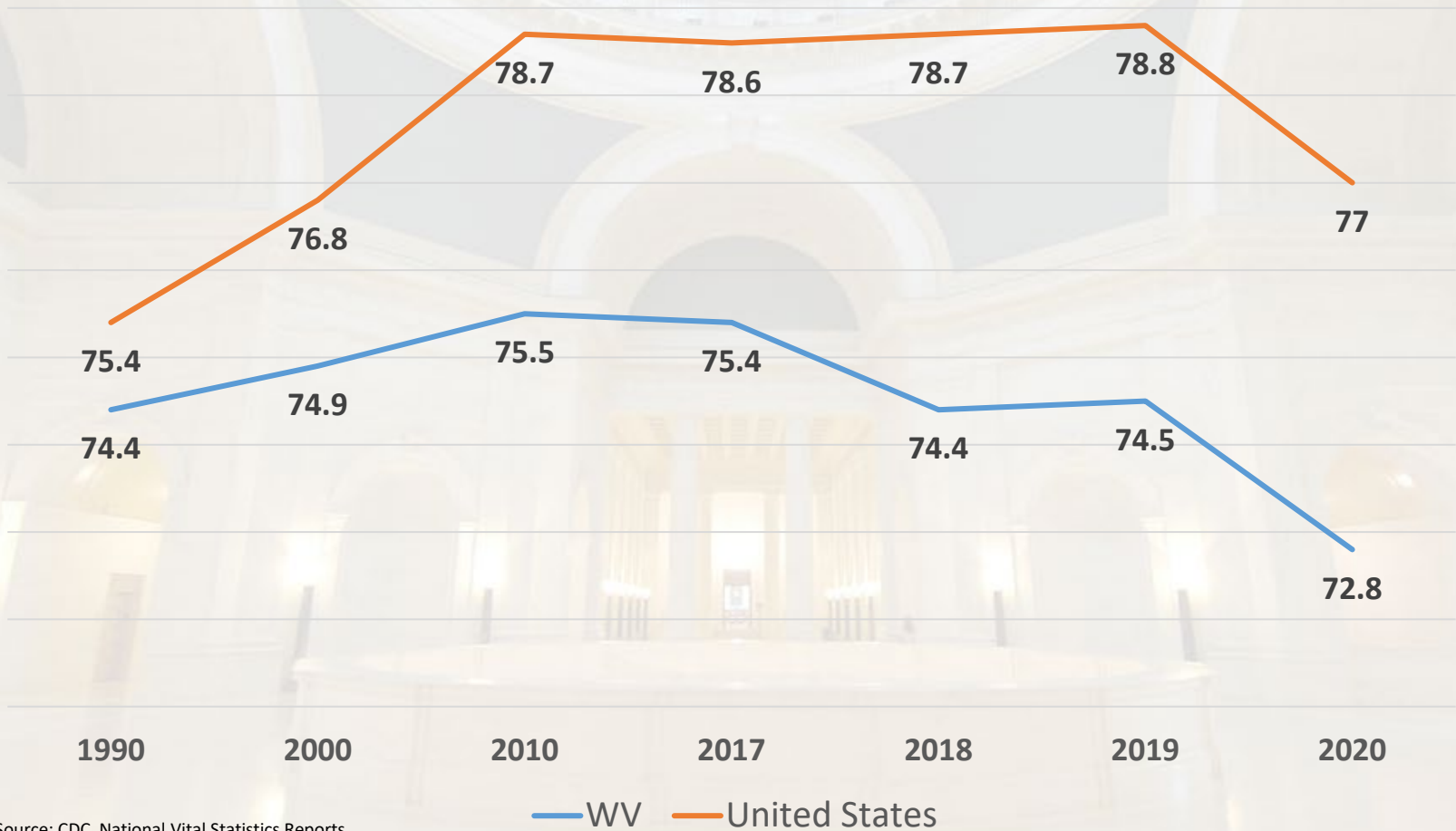


West Virginia's Leading Causes of Death

WV Rank	Mortality Category	WV Rate	WV Deaths	WV National Rank <small>(per capita)</small>
1	Heart Disease	197.8	5,123	10
2	Cancer	177	4,725	2
3	Accidents	122.2	2,242	1
4	Chronic Lower Respiratory Diseases	59.5	1,608	3
5	COVID-19*	42.8	8,067	2
6	Diabetes	41.3	1,075	1
7	Stroke	36.7	952	25
8	Alzheimer's Disease	35.9	932	21
9	Kidney Disease	21.2	555	2
10	Influenza/ Pneumonia	17.9	447	5



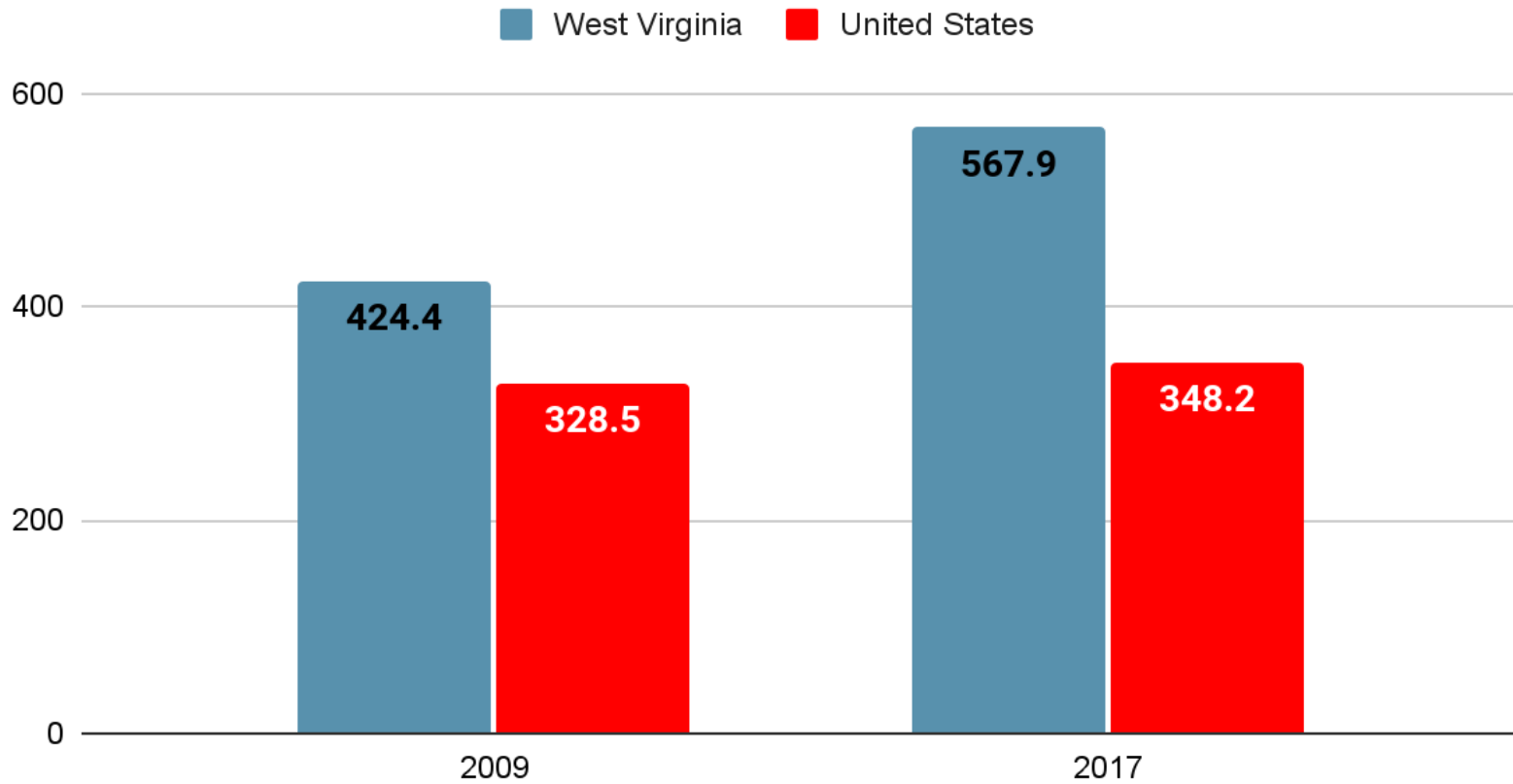
Life Expectancy Comparison



Source: CDC, National Vital Statistics Reports



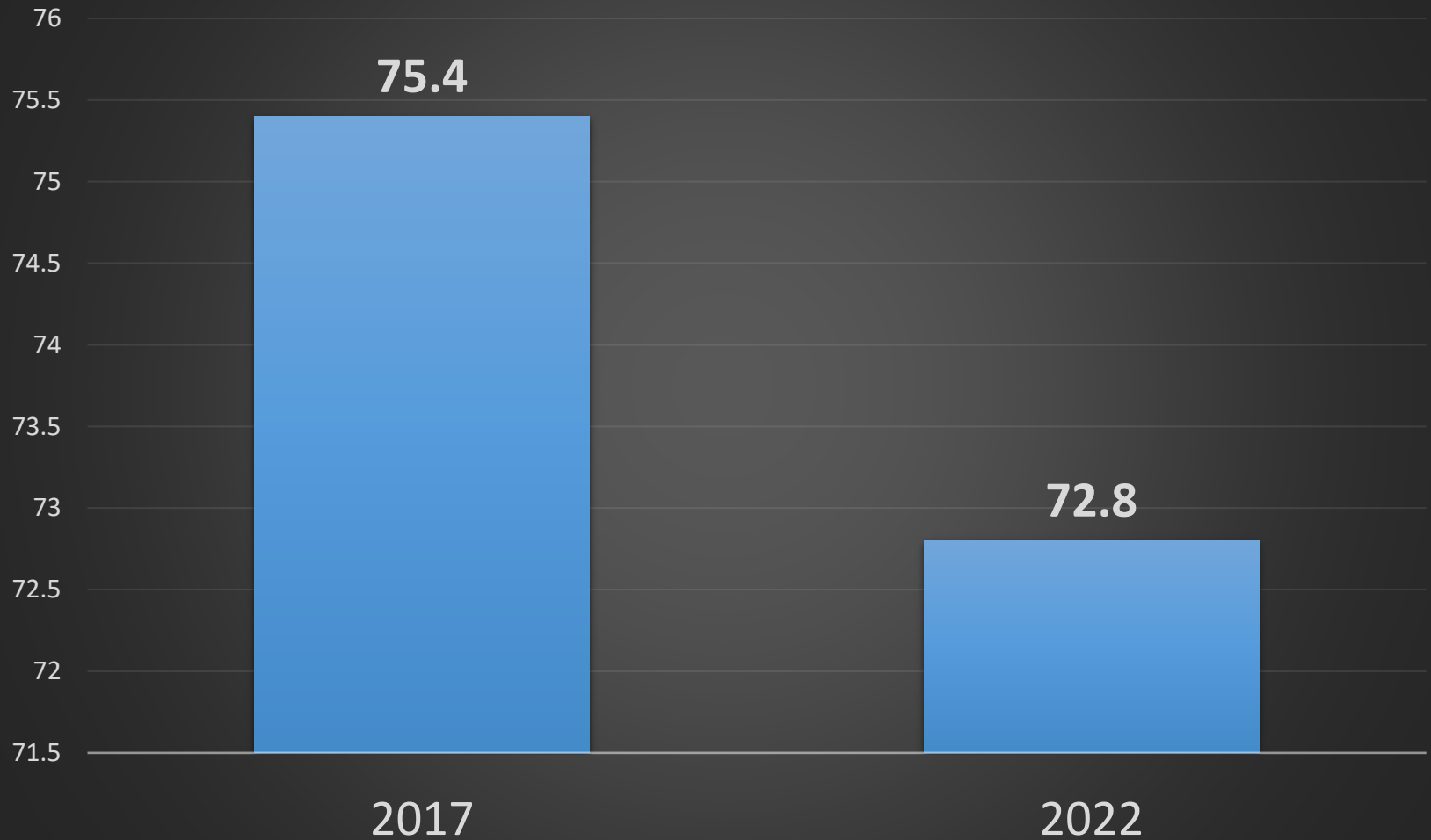
Middle-Aged Death Rate per 100,000 (Ages 25-64)



Source: Woolf SH, Schoomaker H. Life Expectancy and Mortality Rates in the United States. JAMA. 2019.

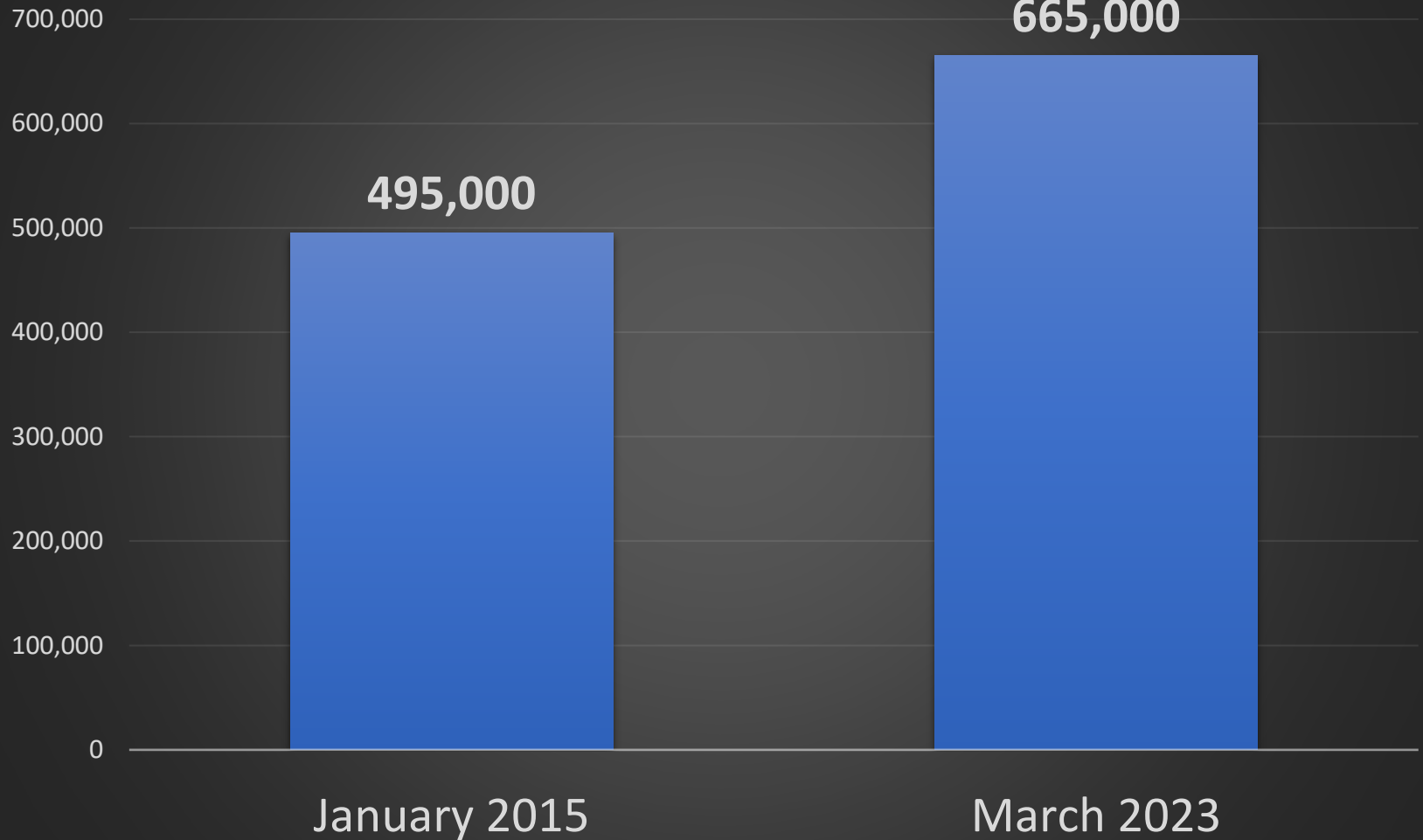


WV Life Expectancy Decline



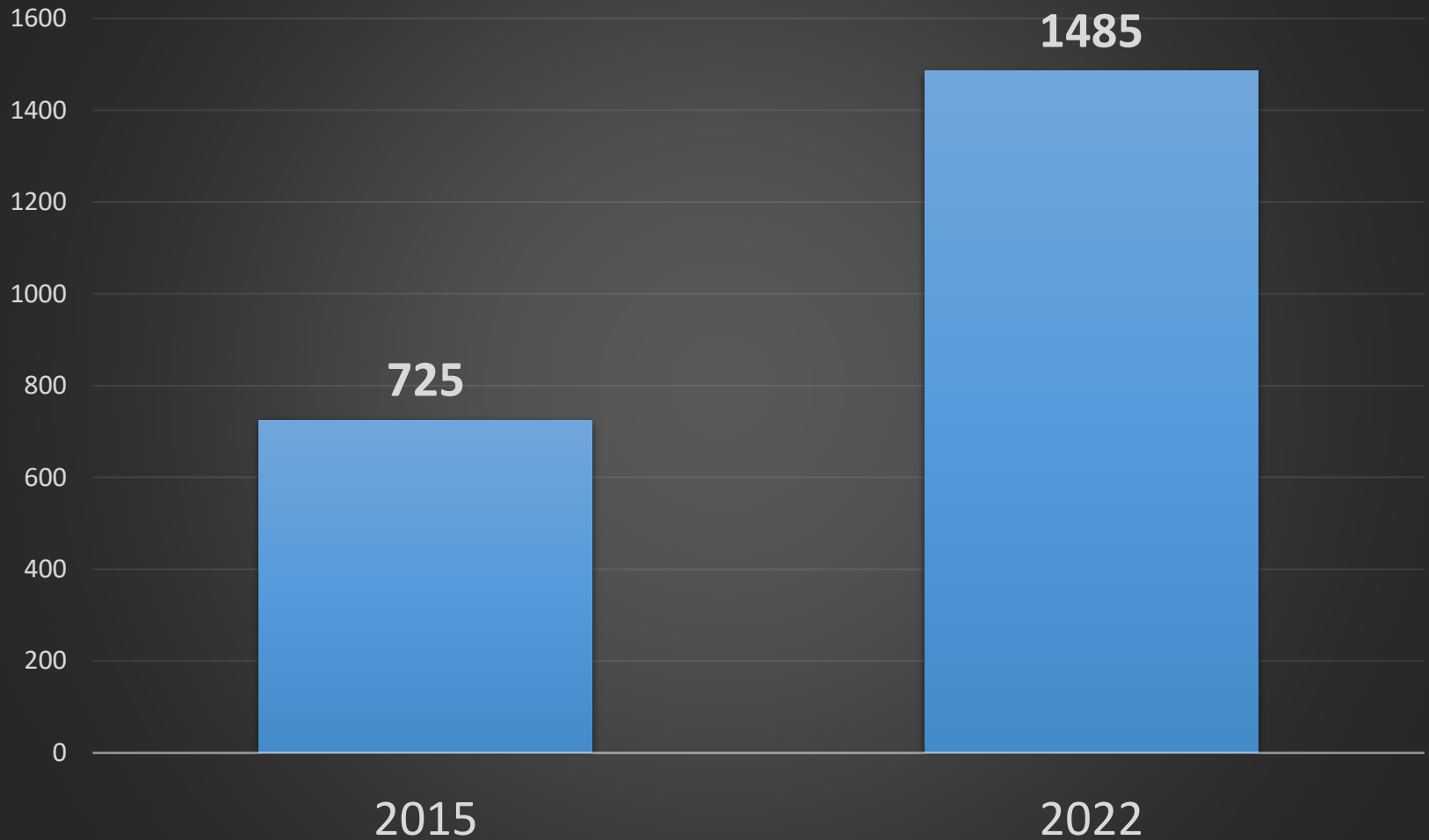


Number of Medicaid Members



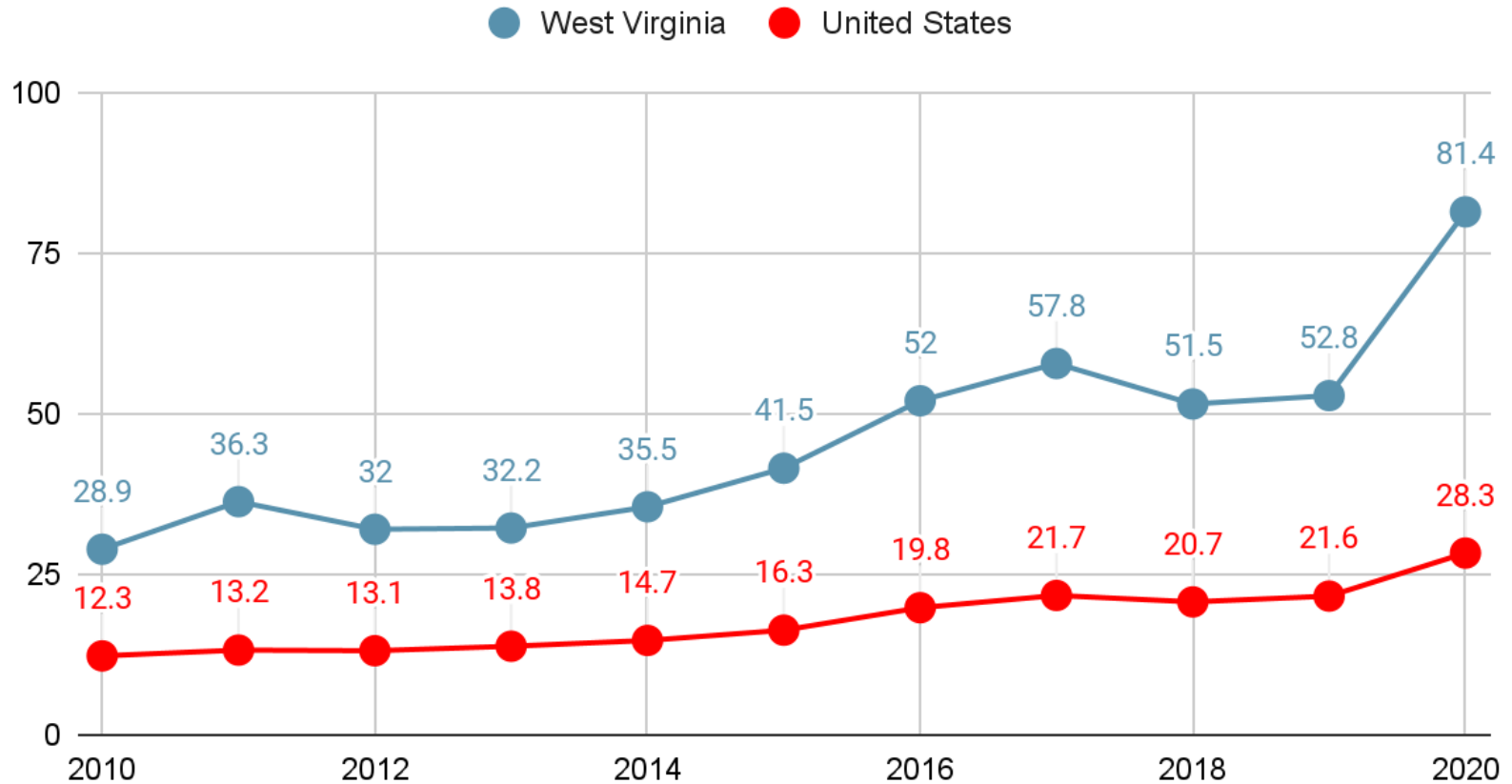


WV Annual Drug Deaths

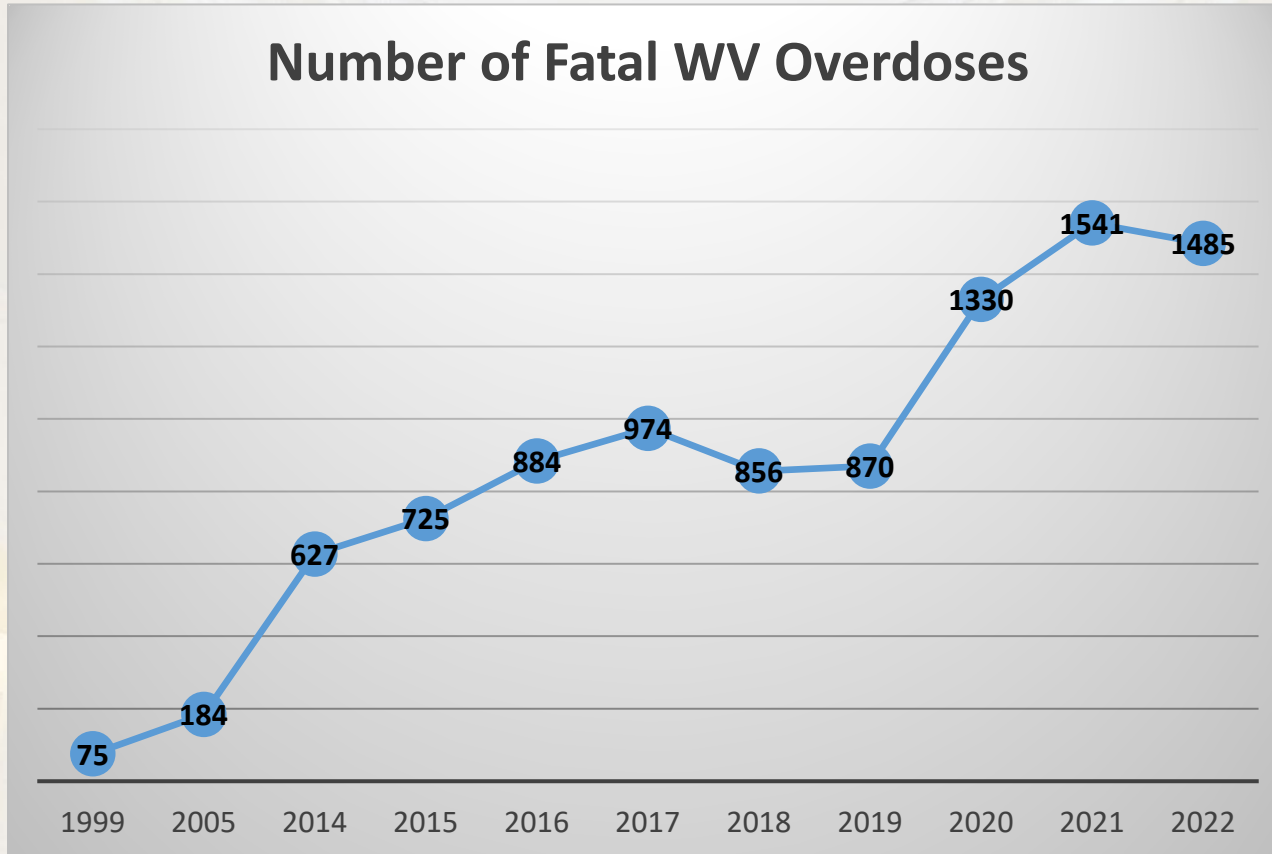




Overdose Death Rate

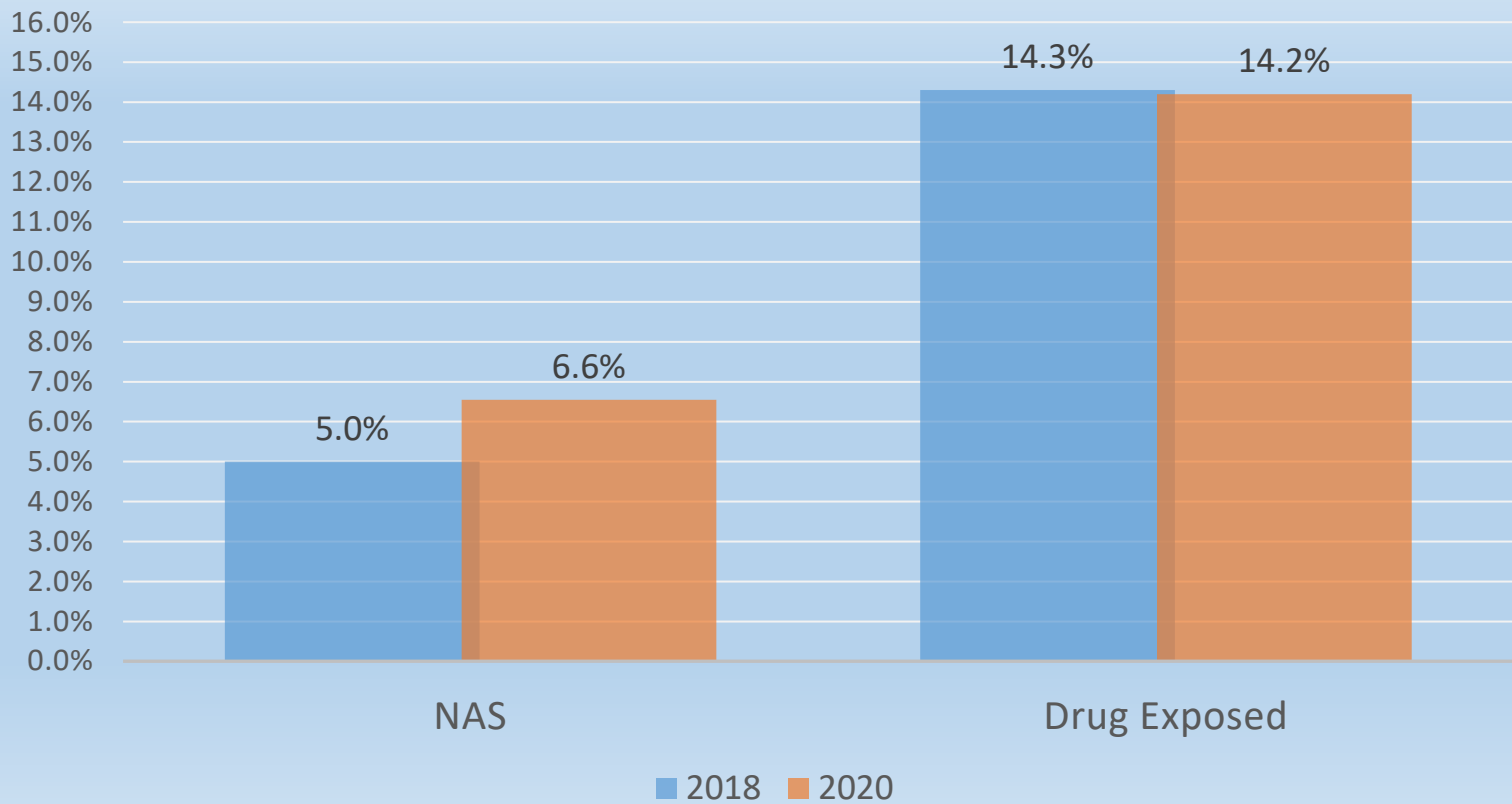


Source: <http://wonder.cdc.gov>

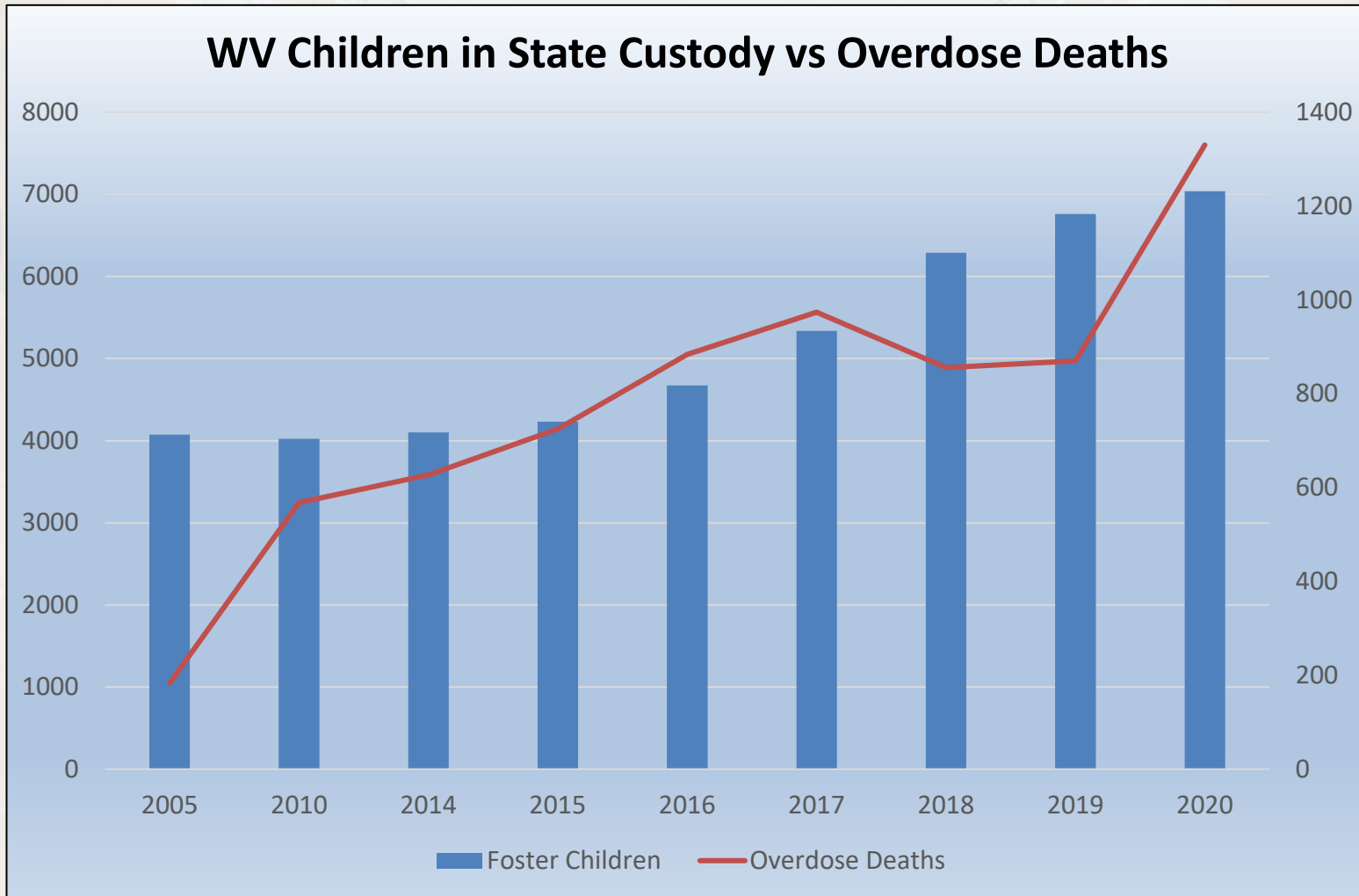




Growth in NAS and Drug Exposed Babies



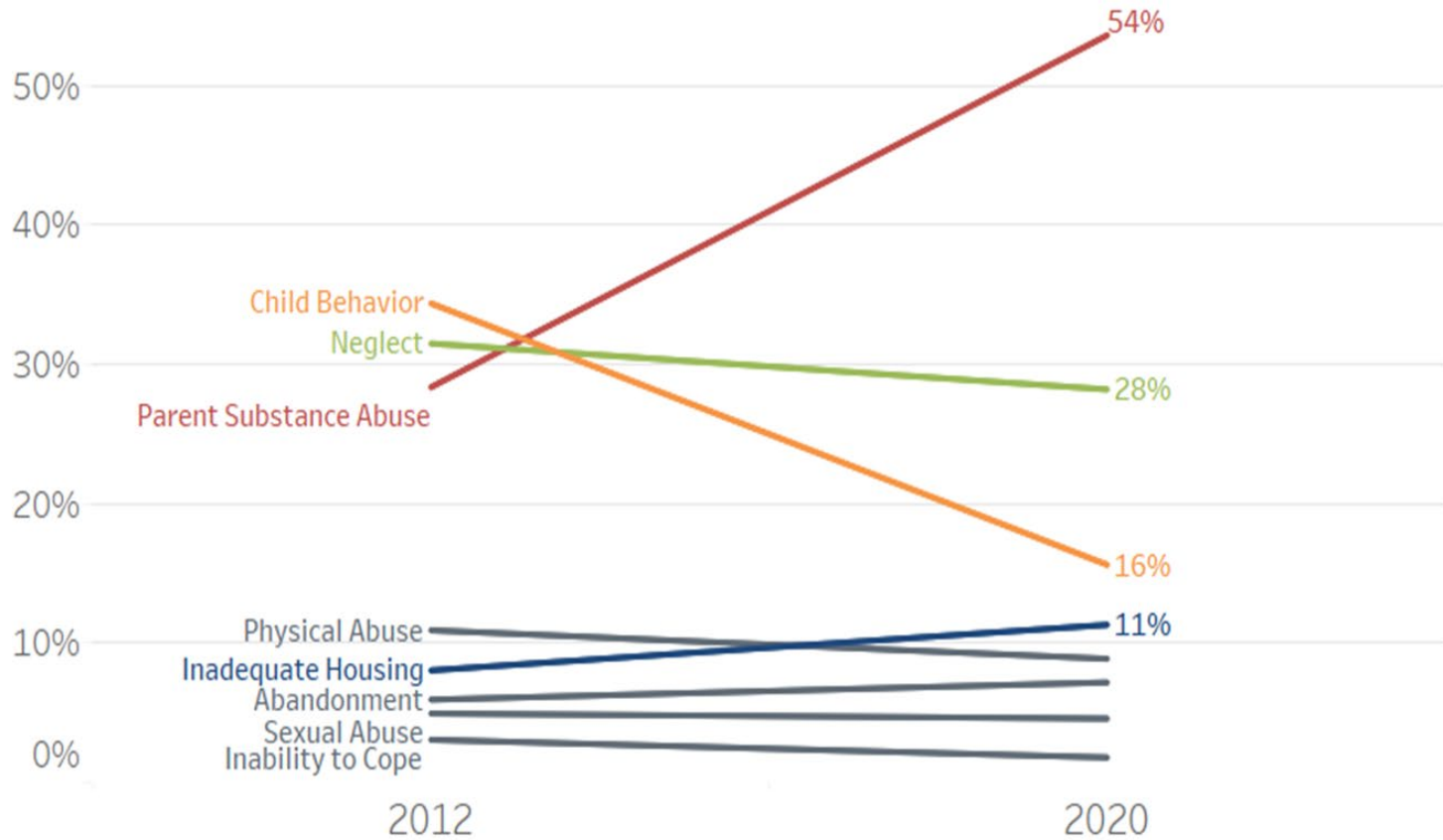
Source: West Virginia Office of Maternal Child and Family Health, December 2021.



Source: West Virginia Legislative Foster Placement Report; CDC Wonder

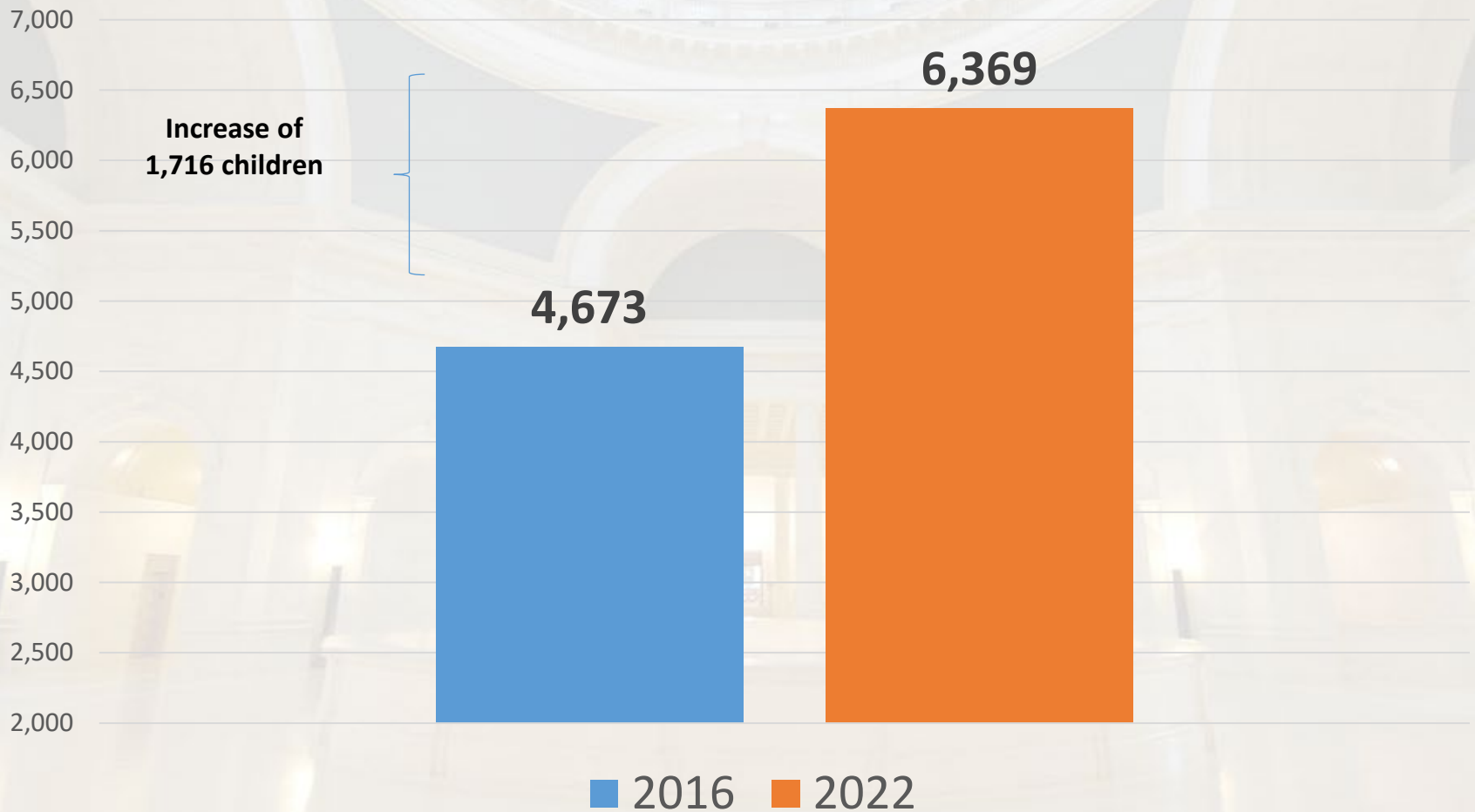


Reasons children enter care





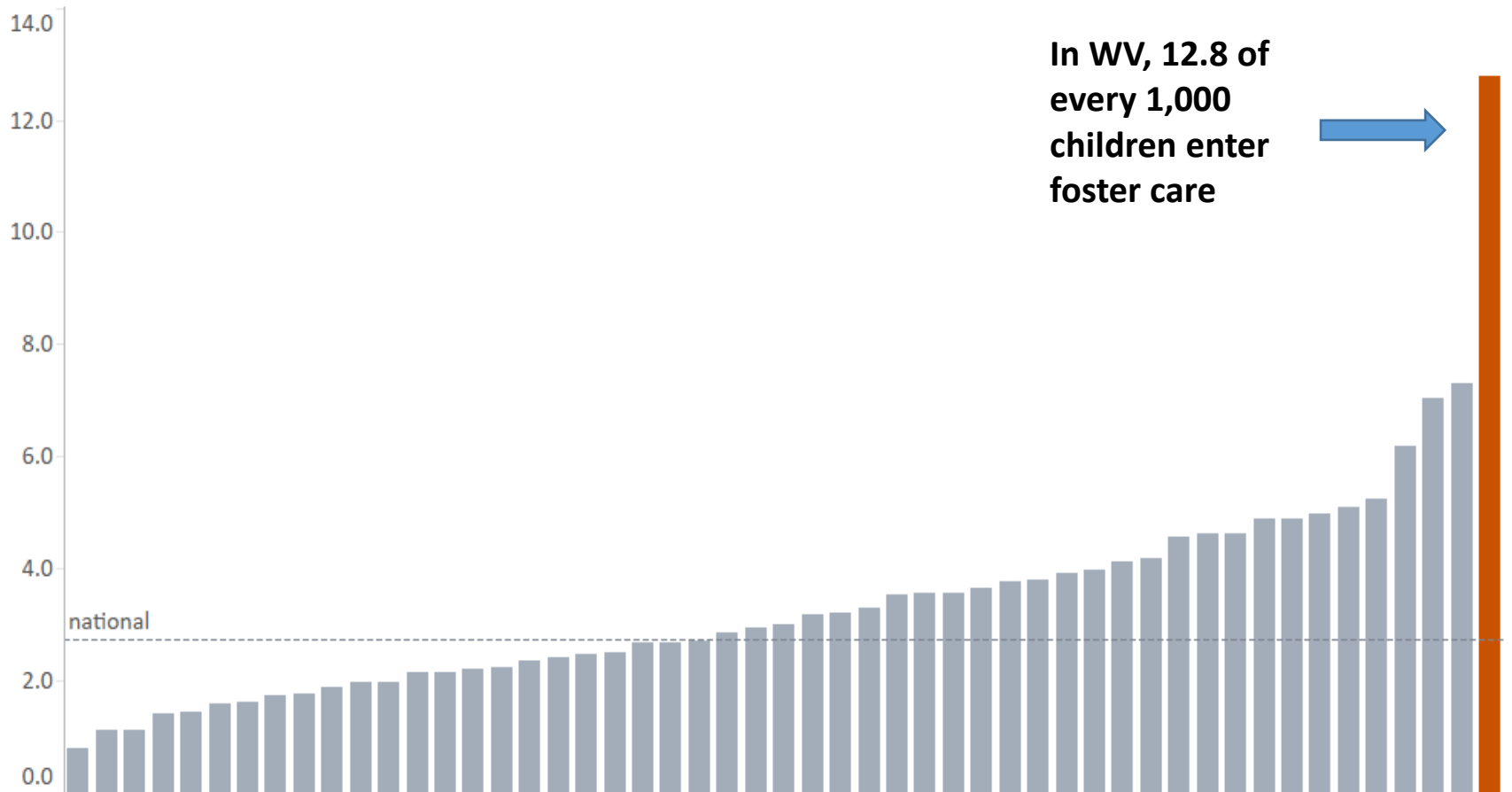
Foster Children Increase



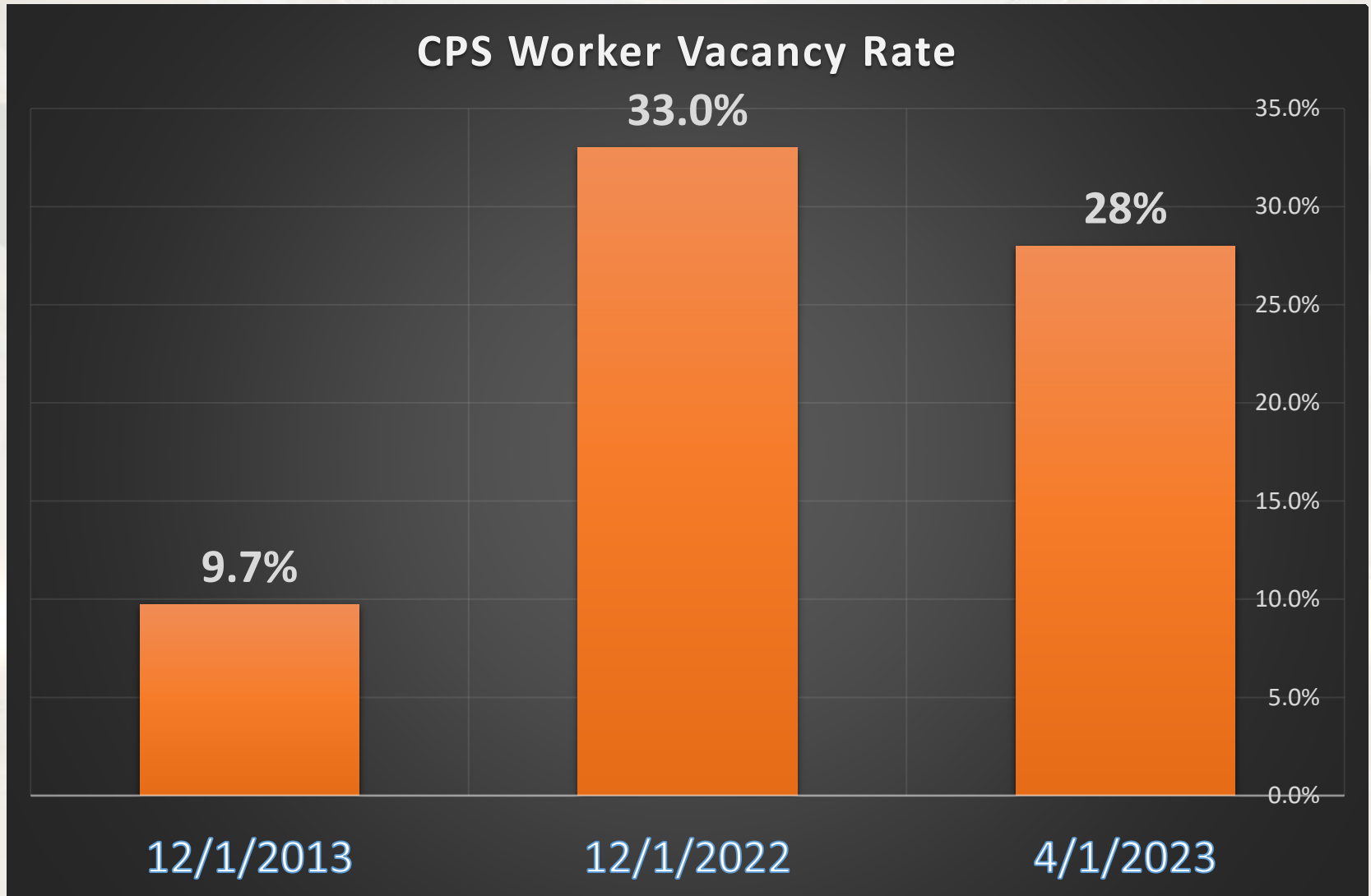
Source: 2016 Foster Care Legislative Report; November 2022 Foster Care Dashboard



Foster Care Entry Rate by State



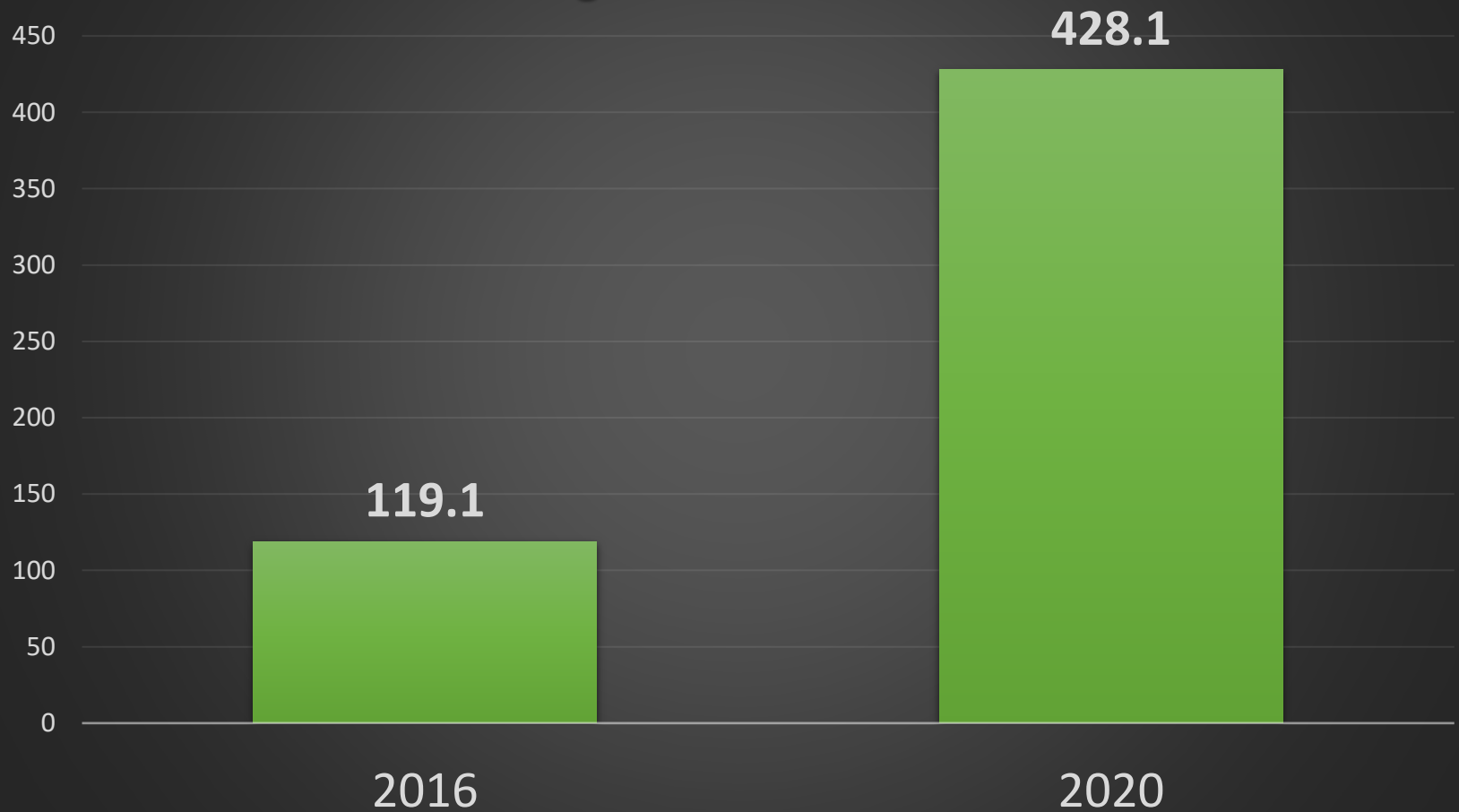
Source: AFCARS; Casey Family Programs



Note: 139 vacant child welfare positions and 602 filled child welfare positions as of April 2023.

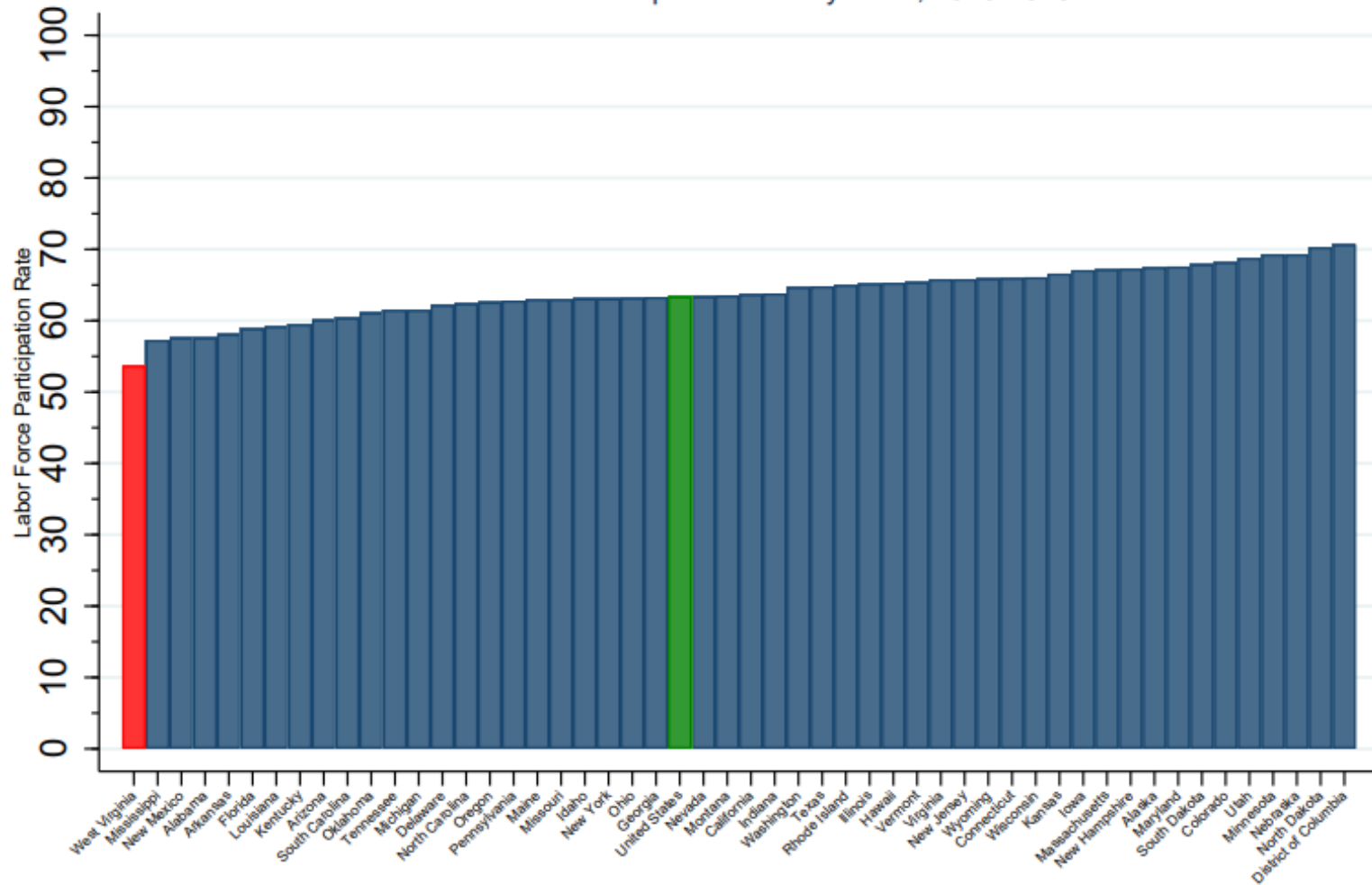


Average Hours to Start CPS Investigation After Referral





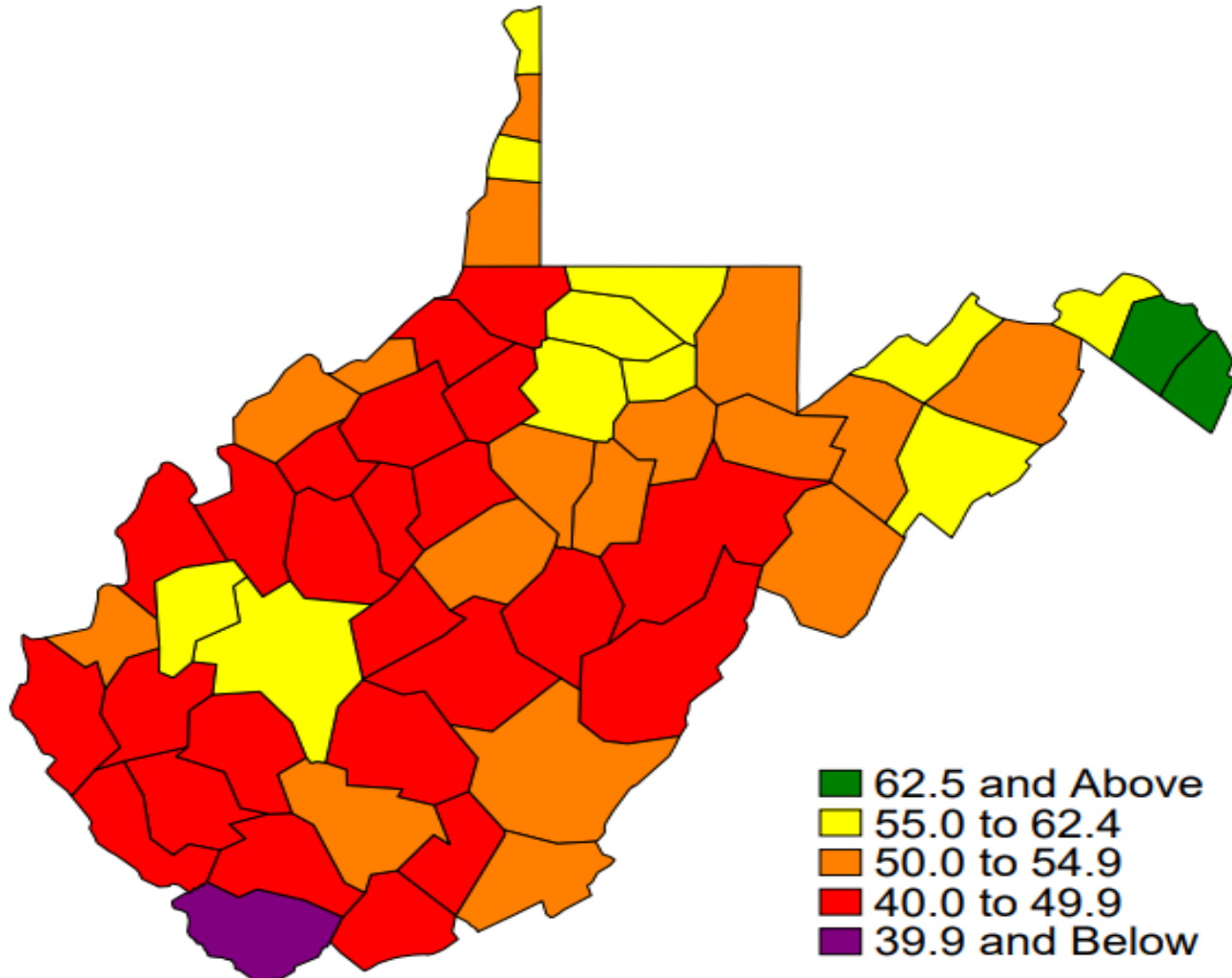
Labor Force Participation Rate by State, 2016-2020



Data Source: U.S. Census Bureau, American Community Survey 5-Year Estimates (2016 to 2020)



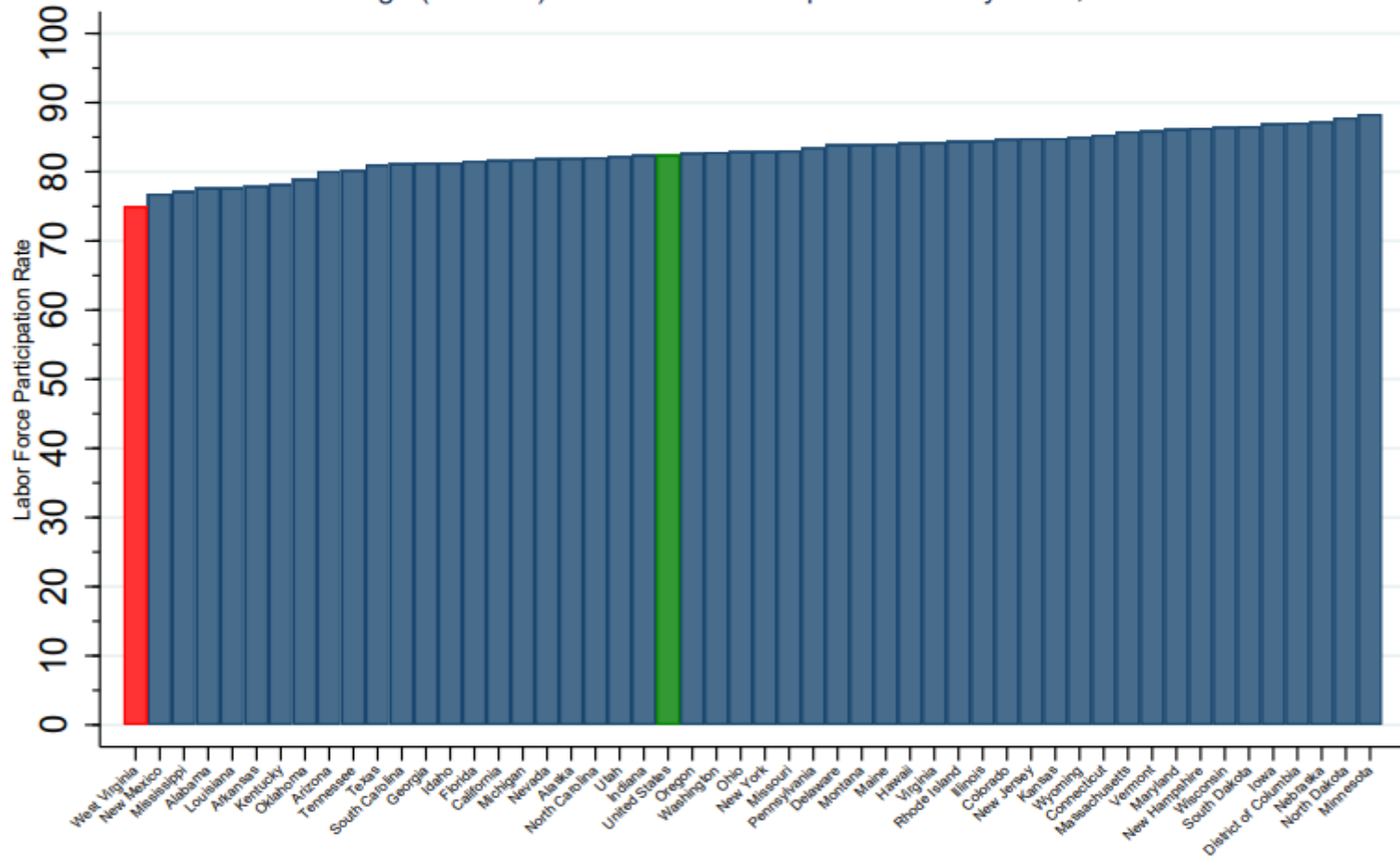
Labor Force Participation Rate by West Virginia County, 2016-2020



The national labor force participation rate for this group was 63.4 percent using the same data over the same years.



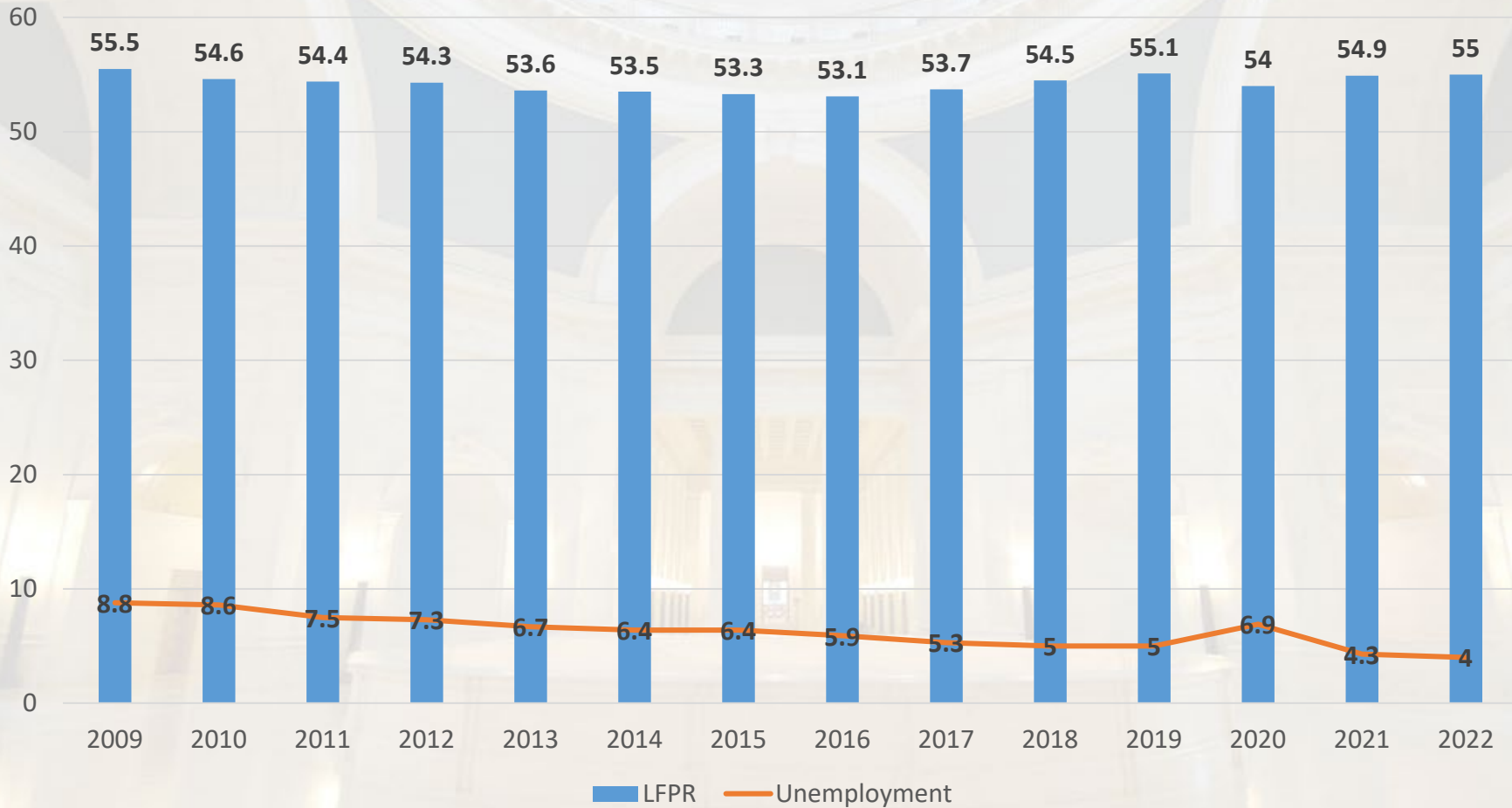
Prime-Age (25 to 54) Labor Force Participation Rate by State, 2016-2020



Data Source: U.S. Census Bureau, American Community Survey 5-Year Estimates (2016 to 2020)



WV Labor Force Participation and Unemployment Rate



Source: St. Louis Federal Reserve, WV Department of Commerce (October Measurement each year)



Workforce in WV

- The labor force participation rate (LFPR) is the number of people in the labor force (working or looking for work) as a percentage of the total population 16 years and older.

	September 2022*	2016-2020 Average**
West Virginia	55.1%	53.7%
Mississippi	55.2%	55.6%
USA Average	62.3%	63.4%

*BLS data from St. Louis Federal Reserve

**ACS data from US Census Bureau

- WV has had the lowest LFPR in the country since state data has been recorded in 1976.
- WV would need to increase the number of people in the labor force 53,500 to match Mississippi.

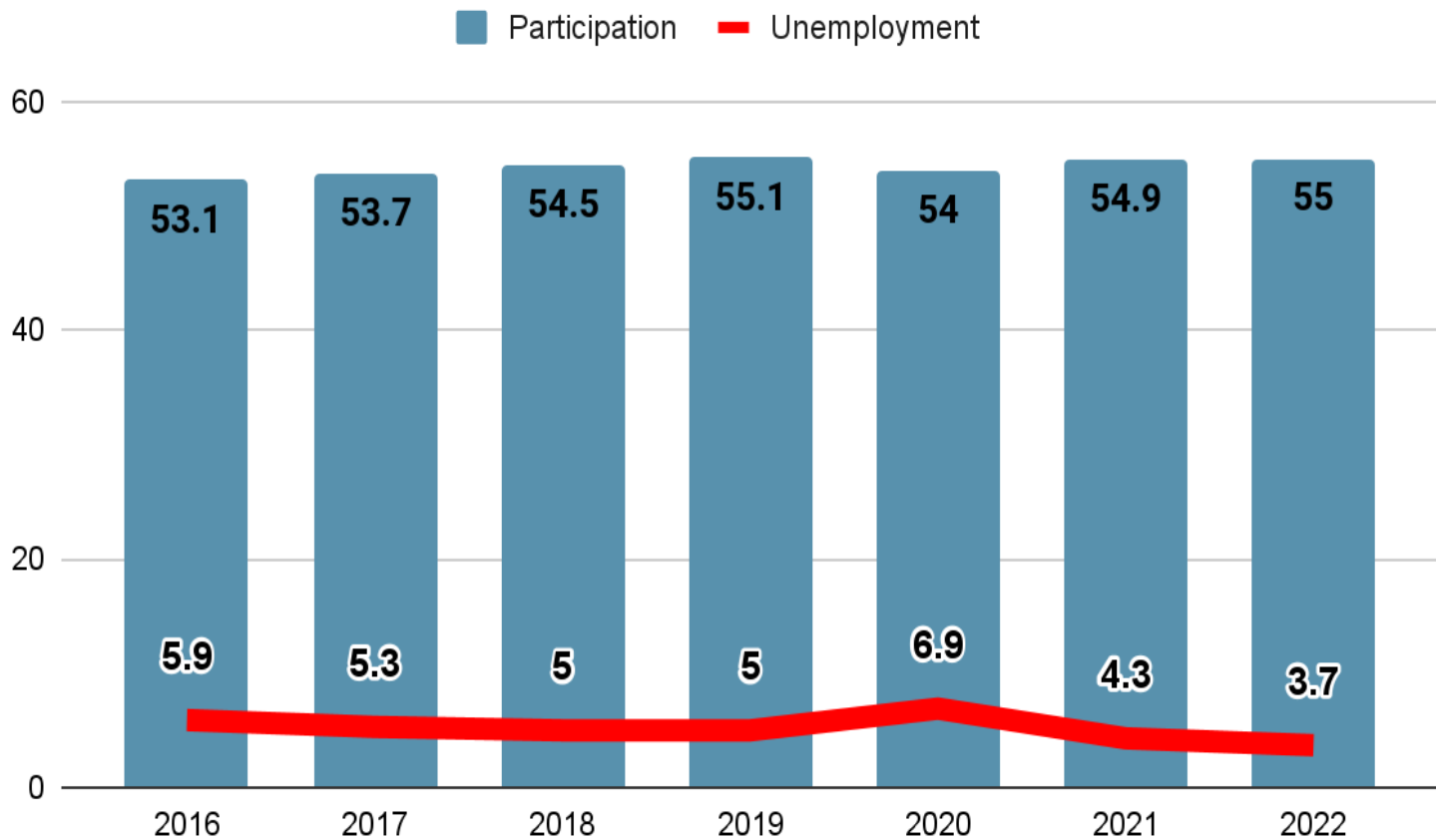


Workforce Participation

- There is a 3.6 percentage point gap between West Virginia and the next lowest state, Mississippi, representing the largest gap between any two states ranked next to one another.
- West Virginia has the lowest overall LFPR, and it does so by a considerable margin.
- If West Virginia were to aim to reach the national average of 63.4, that would mean an increase of 144,077.



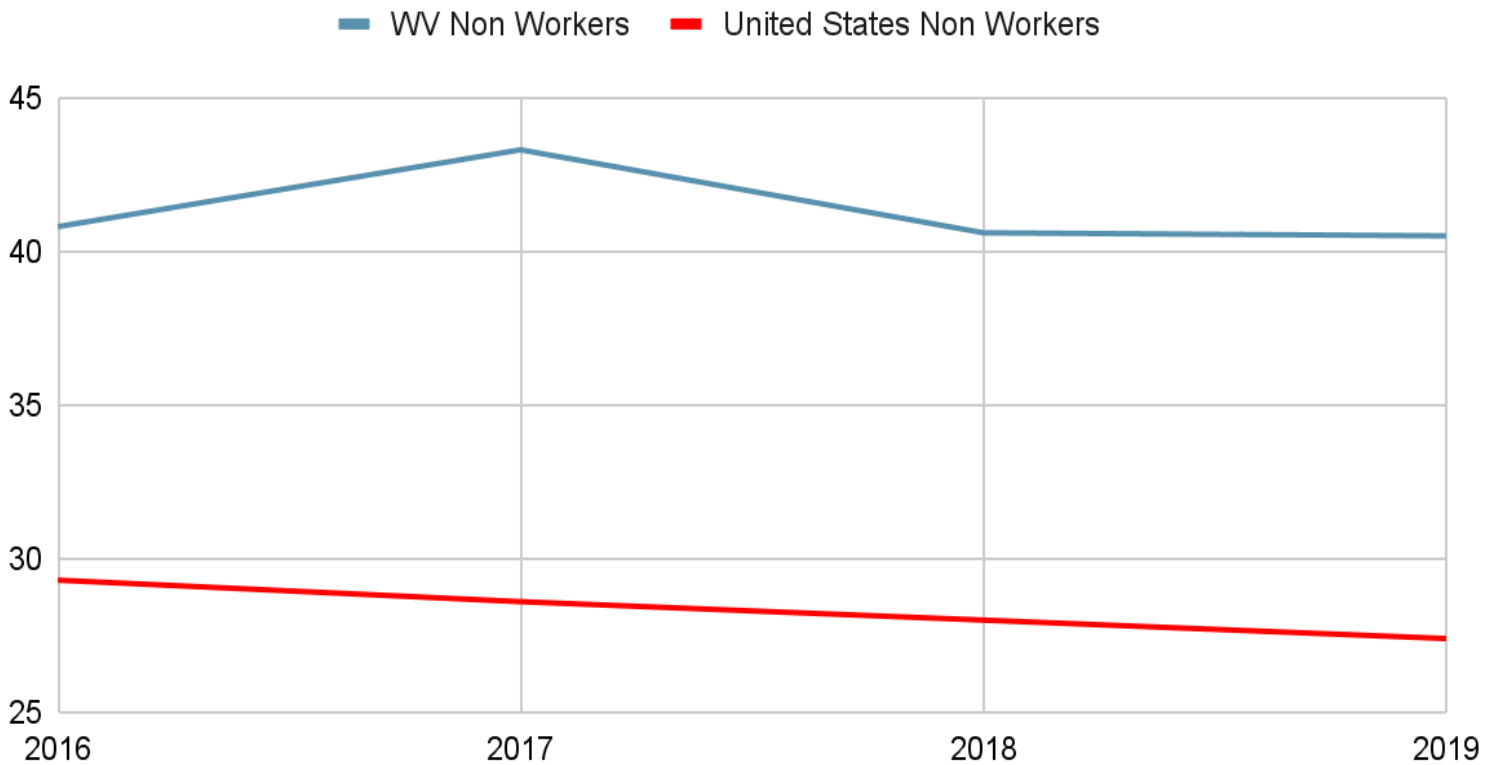
Workforce Participation and Unemployment



Source: St. Louis Federal Reserve, WV Department of Commerce



Nonelderly Adult Medicaid Households Without Worker Participation



Source: Kaiser Family Foundation, estimates based on 2008-2019 American Community Survey



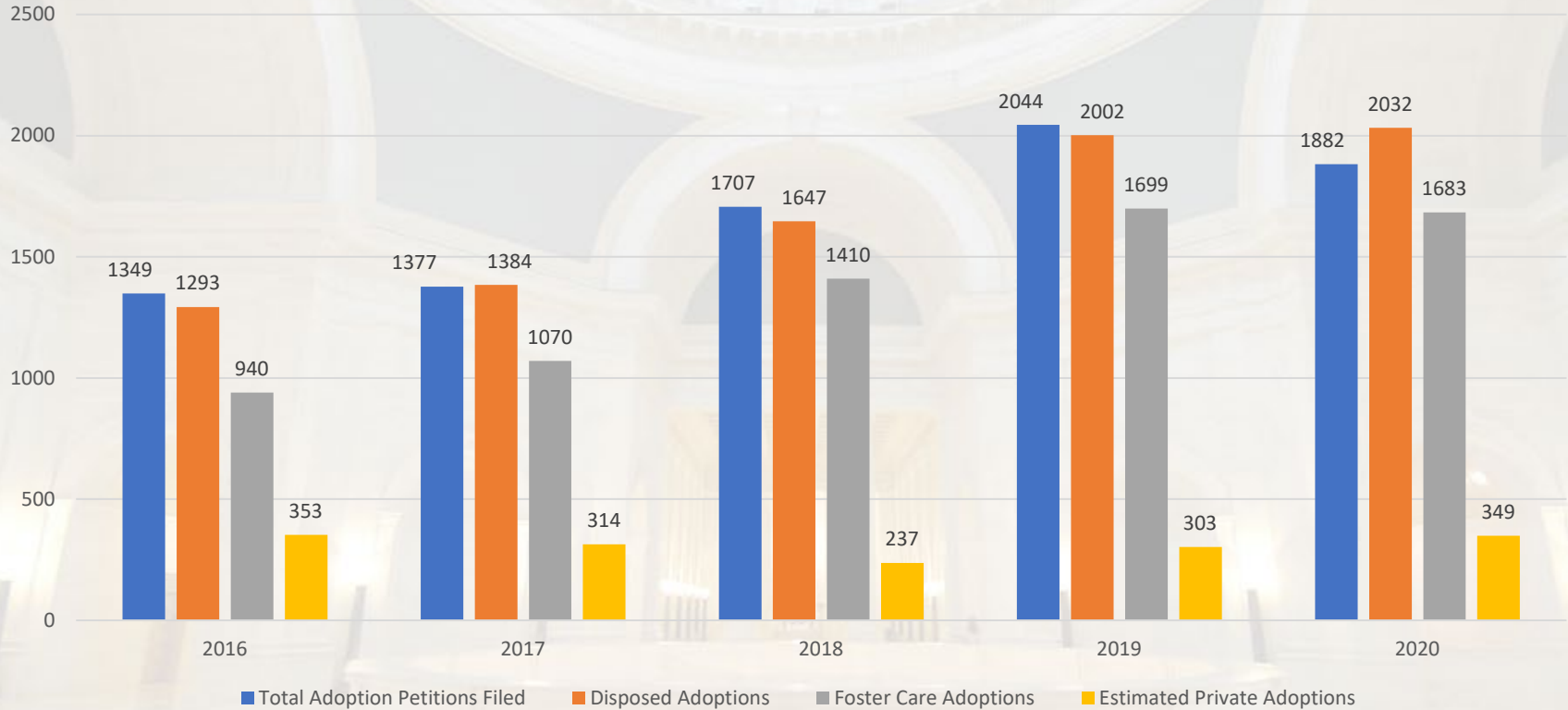
West Virginia Legislature

Joint Committee on Government & Finance

Adoption and Culture of Life Statistics



Estimated Total Number of Adoptions



Source: West Virginia Court Improvement Program, Division of Children and Juvenile Services. Note: There is recognized nominal variation in the total number of foster care adoptions as pulled from AFCARS by source.

Definitions:

Total Adoption Petitions Filed- These are new petitions for adoptions filed in the given time frame.

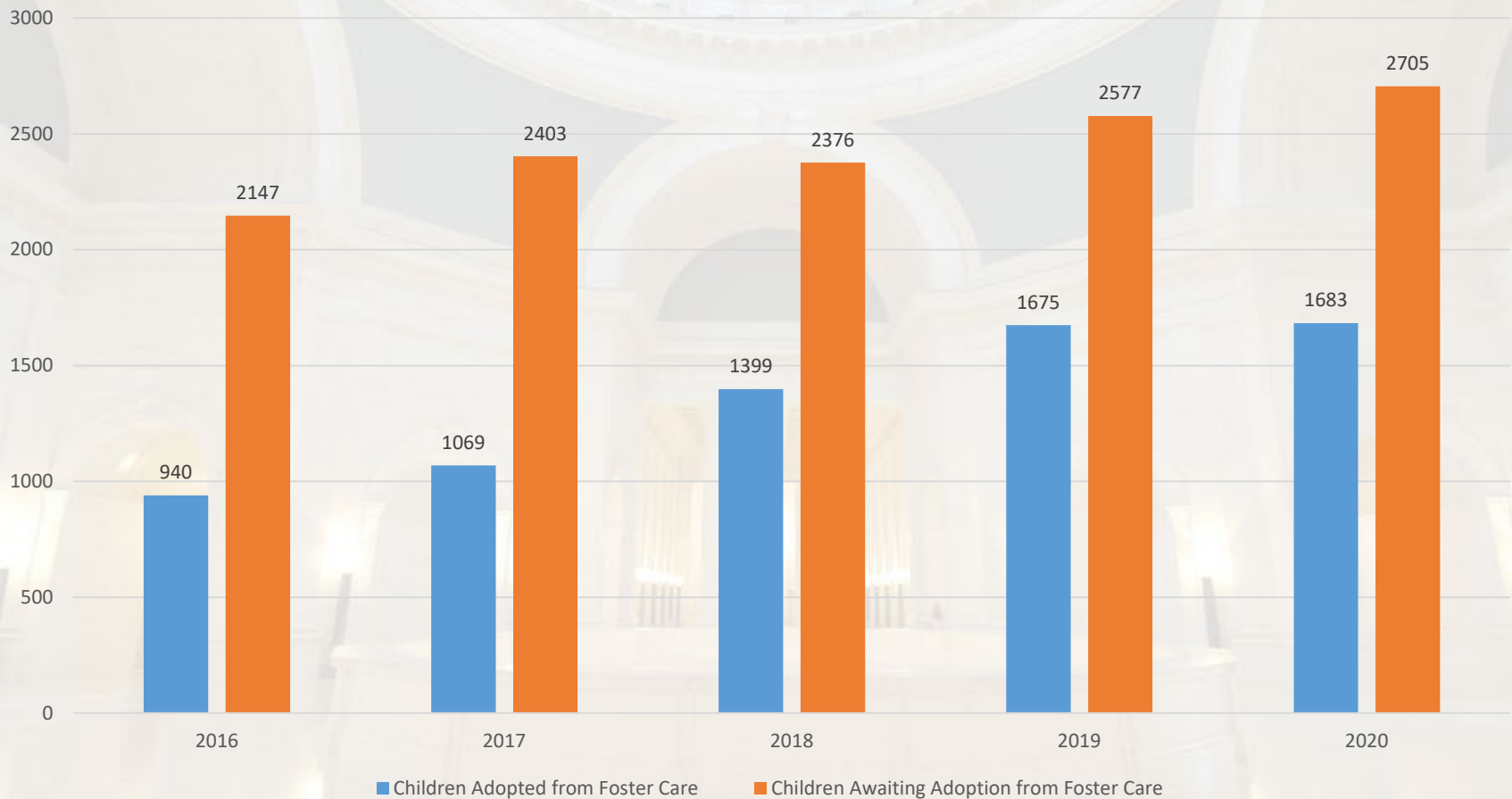
Foster Care Exits to Adoption- This is the number of foster care defined children in West Virginia who reach permanency in the reporting time frame through adoption.

Disposed Adoptions- These are adoptions cases that are finalized during the reporting period. Adoption cases are considered statistically disposed once the order of adoption is entered by the court.

Estimated Private Adoptions- This number, reflected as "Difference" in the Court report, represents the difference between all disposed cases during the reporting period minus those cases wherein the child exited foster care through achieving permanency through adoption.



West Virginia Foster Care Adoption Trends



Source: Annie E. Casey Kids Count, Adoption and Foster Care Analysis and Reporting System (AFCARS)



West Virginia Children in Foster Care Awaiting Adoption by Time Waiting

Time Waiting	Data Type	2016	2017	2018	2019	2020
< 12 months	Number	809	815	673	685	707
	Percent	38%	34%	28%	27%	26%
12-23 months	Number	774	962	997	1078	1148
	Percent	36%	40%	42%	42%	42%
24-35 months	Number	350	356	424	486	479
	Percent	16%	15%	18%	19%	18%
3-4 years	Number	144	189	207	243	274
	Percent	7%	8%	9%	9%	10%
5 or more years	Number	67	78	74	85	97
	Percent	3%	3%	3%	3%	4%
Total	Number	2144	2400	2375	2577	2705

Source: Annie E. Casey Kids Count, Adoption and Foster Care Analysis and Reporting System (AFCARS)



West Virginia Children in Foster Care Awaiting Adoption by Age Group

Age	Data Type	2016	2017	2018	2019	2020
< 12 months	Number	182	191	144	153	178
	Percent	8%	8%	6%	6%	7%
1-5 years	Number	806	925	872	939	955
	Percent	38%	38%	37%	36%	35%
6-10 years	Number	575	624	659	700	743
	Percent	27%	26%	28%	27%	27%
11-15 years	Number	440	507	531	607	626
	Percent	20%	21%	22%	24%	23%
16-20 years	Number	144	156	170	178	203
	Percent	7%	6%	7%	7%	8%
Total	Number	2144	2400	2375	2577	2705

Source: Annie E. Casey Kids Count, Adoption and Foster Care Analysis and Reporting System (AFCARS)



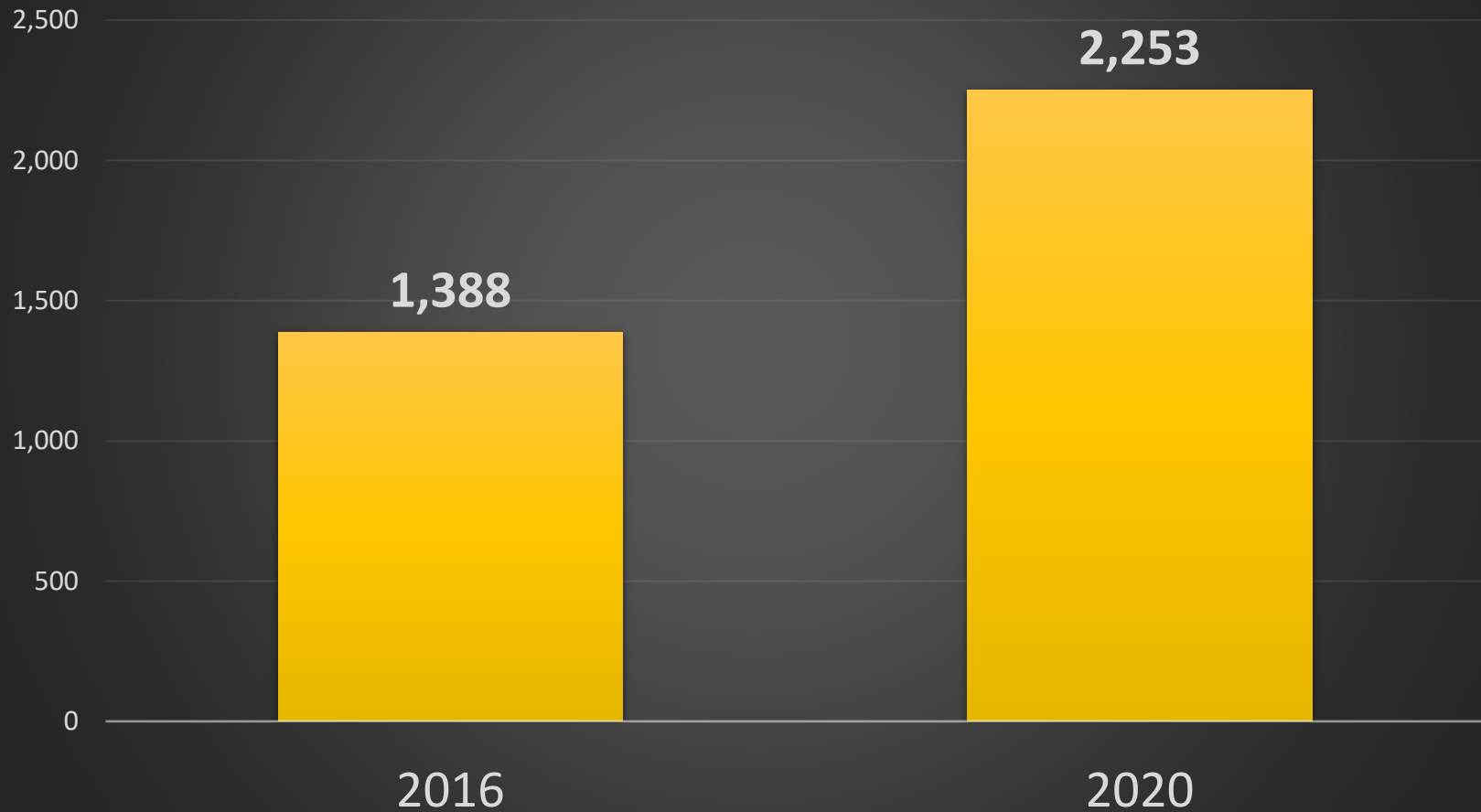
West Virginia Children in Foster Care Adoptions by Pre-Adoptive Relationship

Relationship	Data Type	2016	2017	2018	2019	2020
Adopted by Foster Parent	Number	549	561	742	746	823
	Percent	58%	52%	53%	45%	49%
Adopted by Non-Relative	Number	3	6	12	33	24
	Percent	<.5%	1%	1%	2%	1%
Adopted by Relative	Number	388	501	642	894	832
	Percent	41%	47%	46%	53%	49%
Adopted by Stepparent	Number	NA	1	3	2	4
	Percent	NA	<.5%	<.5%	<.5%	<.5%

Source: Annie E. Casey Kids Count, Adoption and Foster Care Analysis and Reporting System (AFCARS)

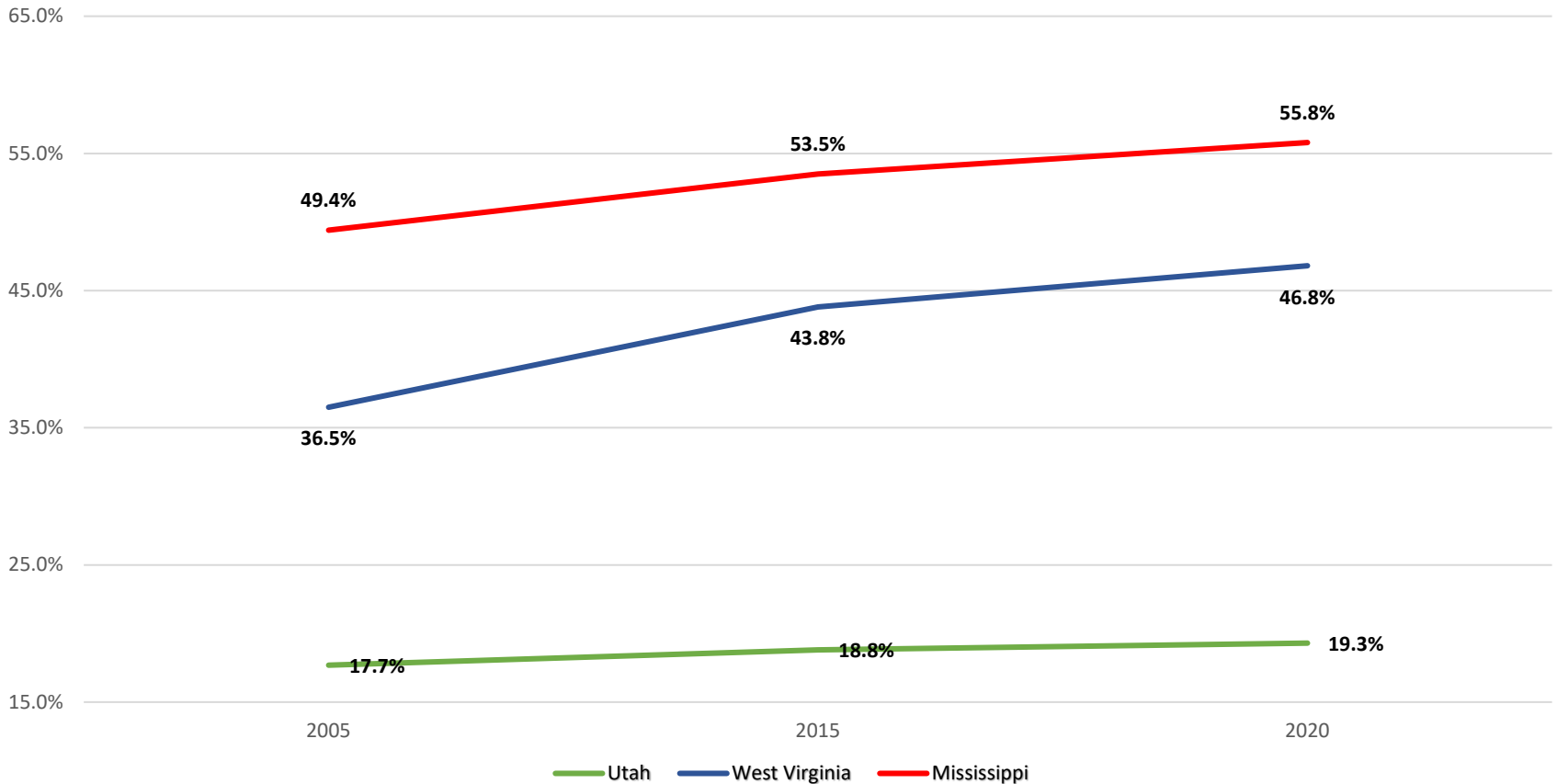


Foster Children in State Custody 24 Months or Longer





Percentage of Births to Unwed Mothers



Source: <https://wonder.cdc.gov>

Note: Utah consistently has the lowest unwed mother birth rate in the United States. Mississippi is consistently has the highest, or next to highest, unwed mother birth rate in the United States.



Select Maternal, Child, and Family Health Statistics

Measurement Title	Metric	Source
Teen Births, 2020	1,139	CDC Wonder: https://www.cdc.gov/nchs/data/nvsr/nvsr70/nvsr70-17.pdf
Total Births, 2020	17,323	CDC Wonder: https://www.cdc.gov/nchs/data/nvsr/nvsr70/nvsr70-17.pdf
Fertility Rate per 1,000 Women Aged 15-44, 2020	55.3	
High School Youth Ever Had Sexual Intercourse, 2019	48.9%	CDC YRBS: https://nccd.cdc.gov/youthonline/App/Results.aspx?LID=WV
High School Youth with No Condom Use During Last Sexual Encounter, 2019	48.4%	CDC YRBS: https://nccd.cdc.gov/youthonline/App/Results.aspx?LID=WV
High School Youth with No Condom, Birth Control Pill, IUD, Shot, Patch, or Birth Control Ring Before Last Sexual Encounter, 2019	57.7%	CDC YRBS: https://nccd.cdc.gov/youthonline/App/Results.aspx?LID=WV
High School Youth Who Drank or Used Drugs Before Last Sexual Encounter, 2019	13.9%	CDC YRBS: https://nccd.cdc.gov/youthonline/App/Results.aspx?LID=WV
High School Youth with Four or More Sexual Partners During Lifetime, 2019	11.7%	CDC YRBS: https://nccd.cdc.gov/youthonline/App/Results.aspx?LID=WV



Select Maternal, Child, and Family Health Statistics

Measurement Title	Metric	Source
Number of Grandchildren Being Raised by Grandparents	33,000	Grandfamilies.org, WV Profile
Number of Grandparents Raising Grandchildren	22,053	Grandfamilies.org, WV Profile
Neonatal Abstinence Syndrome Percentage of Births, 2020	6.6%	West Virginia Office of Maternal Child and Family Health, December 2021
Intrauterine Substance Exposed Babies (Drug Exposed) Percentage of Births	14.2%	West Virginia Office of Maternal Child and Family Health, December 2021
Mothers Having Baby with Neonatal Abstinence Syndrome Having Had Previous Pregnancy	83.57%	West Virginia Office of Maternal Child and Family Health, December 2021



West Virginia Legislature

Joint Committee on Government & Finance

Contact Information

Jeremiah Samples, Senior Advisor
Joint Committee on Government and Finance
West Virginia Legislature
1900 Kanawha Blvd E
Building 1, Room E-136
Charleston WV 25305-0250
304.347.4807 (office)
304.951.1595 (cell)